

FROM GREEN DIRECTORY

Your guide to living a greener
and healthier life
in our town

Green
+ Healthy
Frome



WELCOME TO THE FROME GREEN DIRECTORY

Your guide to living a greener
and healthier life in our town

HOW CAN YOU BENEFIT?

Fortunately, what is good for the planet is also good for us. Cycling, walking or wheeling, making our homes more energy efficient, buying or growing local food - these choices improve our health while cutting fuel and energy, carbon emissions and costs. Repairing, reusing, composting and upcycling also save money. And yes, recycling is great - but reducing waste matters even more.

The best part? Doing stuff together... whether it's cooking, mending, walking, or growing vegetables and fibre with neighbours, these shared moments build connections and boost our wellbeing. Local climate action is often a series of small steps which build momentum over time. Talking to other people about the difference that we can make to the future of our planet is one of the most powerful things that any of us can do - so please spread the word!



WHY DOES THIS MATTER?

Extreme weather - including heavier rainfall and rising temperatures - is reshaping the natural world around us. What and how we consume connects us to the entire world. While it's easy to feel powerless, change starts with us and we can make a BIG difference at a local level. Our choices have a ripple effect on the bigger picture of government and trade.

The climate crisis affects everyone, but hits hardest in communities with the fewest resources. Whether you are concerned for yourself, your family, your town, your country or the entire planet, there are good reasons to make greener choices. According to [impact-tool.org.uk](https://www.impact-tool.org.uk) our household carbon footprint in Frome is going down and is lower than for Somerset which is lower than the UK as a whole...so let's keep going!

CONTENTS

- 04 ACTION GROUPS**
- 04 ARTS AND CULTURE**
- 05 HOMES AND BUSINESSES**
 - 05 SUPPORT IN FROME*
 - 06 FURTHER INFORMATION*
- 07 HEALTH AND WELLBEING**
- 08 TRANSPORT AND TRAVEL**
- 10 FAMILY AND PLAY**
- 11 FOOD AND GROWING**
- 12 LAND AND NATURE**
- 15 REFILL, REPAIR, REUSE AND RECYCLE**
- 16 TEXTILES AND CLOTHING**
- 17 ADULT LEARNING AND SOCIAL ENTERPRISE**
- 17 TRAINING AND VOLUNTEERING**
- 19 ABOUT GREEN AND HEALTHY FROME**
- 19 RESOURCES FOR GREENER LIVING**



HOW DOES THIS DIRECTORY WORK?

We know that everything is changing all of the time...the climate, our priorities and what is happening in Frome. That's why this Directory links to online resources that stay current. Browse by category to find what sparks your interest. Happy exploring!

ACTION GROUPS

Frome is well-known for its independence and community spirit. You can get involved in local action for the planet by connecting with the following groups.



SUSTAINABLE FROME

sustainablefrome.org.uk

Sustainable Frome is a network of local people and organisations who have an interest in the future of our planet. The team supports groups and individuals who want to start something in Frome. You can sign up for the monthly newsletter to hear about local events and news.



KEEP IT FROME

loopfrome.org/keepitfrome

Keep it Frome is a campaign to highlight the thriving circular economy in Frome, including ways to reduce, reuse, repair, recycle and recover materials and food - all alternatives to over-consumption, waste, landfill and exporting our rubbish.



FROME NEIGHBOURHOOD NETWORK (FNN)

fnn.org.uk

FNN is a community organisation that helps to build connected, caring, and resilient communities in Frome at the street and neighbourhood level. Look out for their 'Transition Streets' programme which brings people together to learn about how to reduce their carbon footprint, encourage biodiversity and make a difference.

ARTS AND CULTURE

Art and culture can inspire and motivate us. We can share stories from our own community to the farthest points of our planet. In Frome there are opportunities to get creative which are planet, pocket and family friendly and where you can connect with other people who are interested in arts and culture.



FROME INTERNATIONAL CLIMATE FILM FESTIVAL

climatefilmfestival.co.uk

This annual film festival spotlights films that raise awareness of solutions to climate and environmental issues through local to global storytelling.



TERRESTRIAL

terrestrial.org.uk

Terrestrial brings artists and people of all ages together to connect over art, food and creativity. Everyone is welcome, especially people who don't often have access to arts and creativity.



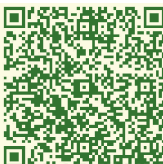
SCRAPSTORE

thepodcharity.org.uk/scrapstore

Scrapstore collects and shares out donated and recycled materials and resources for art, craft and play projects. Their part time store in Frome is full of low cost and often surprising materials!

HOMES AND BUSINESSES

Energy bills in the UK have risen sharply in recent years, putting financial pressure on many households and businesses. Residential buildings account for a fifth of the UK's total carbon emissions so we can make a real difference at home. Energy efficiency in our buildings is good for the planet, saves money and can improve our health by making homes warmer in winter, cooler in summer and less damp. In Frome there are many types of support with energy advice, retrofit (making existing buildings more energy efficient) and renewable energy options - plus advice on grants and loans to cover or help with the costs.



HEALTHY HOMES

frometowncouncil.gov.uk/our-community/our-sustainability-work/green-and-healthy-frome/healthy-homes

Frome Town Council's Healthy Homes Team offers free advice, practical support and guidance to help you access grants or low-interest loans to reduce bills, tackle damp and future-proof your home. Whether it's energy debt support, small changes like draught-proofing or bigger upgrades like insulation and solar panels, we're here to help you create a home that's better for your wellbeing, your wallet and the planet.



SOLAR AND BEYOND

frometowncouncil.gov.uk/our-community/our-sustainability-work/solar-and-beyond

Solar and Beyond is also part of Frome Town Council, providing bespoke support for homes and businesses to access renewable and locally sourced energy. The team also provides advice on grants and funding, along with support to identify suppliers and installers.



CENTRE FOR SUSTAINABLE ENERGY (CSE)

cse.org.uk

CSE provides information and advice on tackling fuel poverty and improving energy efficiency. The team can advise on grants for people who are eligible. In Somerset, CSE runs the Somerset Safe and Warm Project to support households struggling to pay bills or to stay warm - 0800 038 5730

HOMES AND BUSINESSES: FURTHER INFORMATION

SUPPLIERS AND INSTALLERS

Before purchasing goods or services for home improvements such as retrofit or renewable energy, it's important to understand how to identify and contract with reliable suppliers and installers. Your first point of contact is the relevant team at Frome Town Council (see above) who can advise on the process.

The below resources provide a guide to the qualifications and accreditations which an individual or a company should hold to undertake this work. Whilst we cannot recommend specific products, suppliers or installers, Frome Town Council Healthy Homes Team may be able to signpost you to products or local companies to consider and help you to understand quotes.

ENERGY EFFICIENCY AND RETROFIT RESOURCES

- cse.org.uk/my-home/advice
Reliable advice pages on domestic energy use
- responsible-retrofit.org/greenwheel
Help with decision-making and information about retrofitting older properties.
- futureproof.uk.net
Qualified retrofit coordinators who can provide a paid for service to organise and manage your contractors through to project completion.
- retrofitsomerset.info
Directory to help you find local businesses and services to help you with your eco retrofit project.
- someset.gov.uk/housing-support/somerset-energy-saver/somerset-energy-saver-financial-help
Local grants, loans and financial assistance.
- lendology.org.uk/loans/home-improvement-loans
Not-for-profit, council-backed social lender providing home improvement loans to homeowners across the UK.

SOLAR RESOURCES

- frometowncouncil.gov.uk/our-community/our-sustainability-work/solar-and-beyond/homes-solar-and-beyond
Solar and Beyond's list of solar installers.
- solarwizard.org.uk
A tool to calculate the potential to generate electricity from rooftop solar panels for homes in England, Scotland and Wales.
- cse.org.uk/advice/a-complete-guide-to-solar-pv
An overview of the process and how to select a solar installer.

HOME IMPROVEMENTS

We recommend that you use products and installers which are MCS and TrustMark accredited:

- mcs-certified.com/product-directory
- mcs-certified.com/find-an-installer
- trustmark.org.uk/homeowner



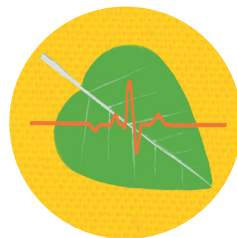
FRECO

freco.org

Frome Renewable Energy Community (FreCo) enables the local community to invest in clean, renewable energy through community shares.

HEALTH AND WELLBEING

Very often, what is good for our health is also good for the planet and making small changes in our day-to-day lives can make a big difference to how we feel and our impact on the environment around us. There are many opportunities available to people in Frome and the surrounding area to make such changes. This might include moving more, eating well, sleeping better, finding balance in your day-to-day life and connecting with other people.



FROME MEDICAL PRACTICE

fromemedicalpractice.co.uk

The team at Frome Medical Practice supports patients to make changes in how they live so they can improve their health and wellbeing. A range of opportunities are available to patients, including group programmes, one-off events, and 1-1 support. This can include connecting people to external activities that can support their health, including nature and wellbeing activities. Healthcare professionals at the practice also work with patients to look at the range of medicine they take and to make changes, if appropriate, and patients are encouraged to 'only order what you need' for repeat prescriptions. The approach the practice takes to health, wellbeing, and sustainability means they are recognised as a leader in sustainable primary care.



HEALTH CONNECTIONS MENDIP

healthconnections mendip.org

Health Connections Mendip works alongside Frome Medical Practice (as well as other practices in Mendip) providing links to all kinds of free health and social support. See the 'green social prescribing' section for nature based opportunities.



PLASTIC FREE PERIOD

frometowncouncil.gov.uk/our-community/our-sustainability-work/waste/plastic-free-period

Reusable period products such as period pants/pads and menstrual cups reduce exposure to toxic chemicals found in many products, save on waste and are much cheaper than disposable products. Frome's Plastic Free.Period. campaign provides advice and information on safe alternatives.



COMMUNITY GROUPS

frometowncouncil.gov.uk/find/frome-living/community-groups-clubs-and-hobby-groups

In Frome there are many community-led groups who want the best for people and planet. Look out for the 'Nature and Environment' section - we know that getting connected to nature encourages us to care for the planet as well as improving our health.



THE KINDNESS FESTIVAL

thegoodheart.uk/frome-kindness-festival

At the annual Frome Kindness Festival every March the town comes alive to celebrate the contribution that kindness makes to our relationships, wellbeing, planet and community.



TRANSPORT AND TRAVEL

Transport is the largest sector for emission of greenhouse gases in the UK. We have many opportunities and groups in Frome which encourage walking, wheeling and cycling or public transport options.



FROME'S MISSING LINKS

fromesmissinglinks.org.uk

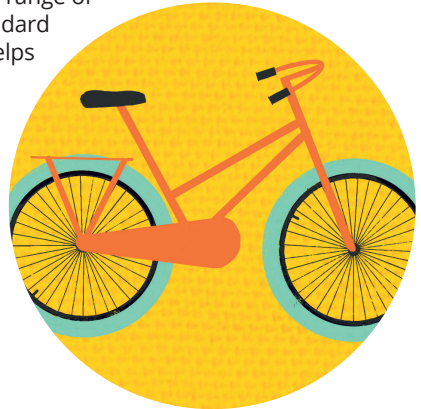
Frome's Missing Links is a local charity campaigning to get the Colliers Way route from Frome to Radstock completed for pedestrians, runners, cyclists and other wheeled options and to create new links between Frome and the surrounding villages.



FROME COMMUNITY BIKE PROJECT (FCBP)

fromebikeproject.org

FCBP helps people enjoy cycling by making it easy, affordable, and welcoming. The Project refurbishes and sells donated bikes, offers bike servicing and repairs and has a range of bikes for hire including e-bikes, standard bikes and a cargo bike. FCBP also helps people build cycling confidence through their 'Book a Buddy' scheme, cycle training and friendly social bike rides.





FROME CYCLE TOURING CLUB (CTC)

cyclinguk.org/local-groups/frome

Frome CTC is a group of cyclists that ride 30+ miles each Sunday morning, starting from outside the Cheese and Grain at 9am with a mandatory coffee/tea/cake stop en route.



WALKERS ARE WELCOME

discoverfrome.co.uk/things-to-do/outdoors-and-active/walkers-are-welcome

Walkers are Welcome is a UK wide, community led network of accredited towns (including Frome), whose purpose is to develop and promote walking.



FROME CAR-FREE WALKING GROUP

frometowncouncil.gov.uk/directory/frome-car-free-walking-group

A group of people who like walking without driving, who run monthly led walks (8-12miles), usually on Saturdays, mixing walks from Frome and walks further afield by bus and train.



FROME AND VILLAGES BUS USER GROUP (FAVBUG)

facebook.com/Favbug/?locale=en_GB

A local group which supports and campaigns for local bus services.



SUSTAINABLE TRANSPORT OPTIONS IN FROME

frometowncouncil.gov.uk/our-community/our-sustainability-work/sustainable-transport

Frome Town Council's Sustainable Transport page includes links to walking, cycling and wheeling and other schemes to encourage active travel and to reduce emissions.



FROME CO-WHEELS CAR CLUB

frometowncouncil.gov.uk/directory/co-wheels-car-club

Co-Wheels runs a cheaper, eco-friendly car-sharing scheme in Frome with two low-emission cars available through the Town Council (outside the Town Hall and around Alexandra Road).

FAMILY AND PLAY

Children and young people are growing up in an uncertain world. In Frome, there are many organisations providing opportunities for young children and families to get involved in community action, learning and play where the welfare of planet and people are respected equally.



FROME YOUTH CLIMATE ACTION

greenhealthyfrome.org/youth-voice

This dynamic group of 12- to 18-year-olds is building a movement of youth-led climate action, through regular meetings, excursions and powerful processions. Keep an eye on the webpage for events after March 2026.



FROME FAMILIES FOR THE FUTURE

fromefamiliesforthefuture.co.uk

Frome Families for the Future organises family-friendly activities advocating for a brighter and greener future for all children and provides advice and information on greener choices for families and residents.



SUPER ROOTS

super-roots.org

Super Roots creates opportunities for young people where wild, inclusive DIY adventure play meets the Forest School's love of nature.



SHARED EARTH LEARNING CO-OPERATIVE (SELCO)

sharedearthlearning.org

SELCO is a collective of Forest School practitioners in Frome, helping children and young people to boost their wellbeing by being and learning outdoors and building a closer connection with nature.



FROME TOY LIBRARY

frometowncouncil.gov.uk/directory/toy-library

Frome's Toy Library runs a lending library for toys - a great way to refresh your toy stash and reduce waste! They also offer stay and play sessions.

See also Terrestrial and Scrapstore in Arts and Culture



FOOD AND GROWING

The food we eat is our daily connection to the planet, and of course what we eat and drink shapes our health. Fresh, local food is nutritious and tasty and supports local growers and farmers. If we can buy more food with fewer food miles, less packaging and produced with care for the land it will be healthier for people and planet.

High quality food should be available to everyone, but healthy, local food can be costly. Look out for fresh fruit and vegetables in Frome's community fridges which save waste and redistribute surplus from retailers and producers. Growing and eating more plant-based food is also great for our health and pockets and has a lower carbon footprint than most animal products.



FROME FOOD NETWORK (FFN)

fromefoodnetwork.co.uk

A collective of 160+ foodie people, businesses and organisations local to the area. FFN is interested in local food, community growing and sustainable and regenerative farming. FFN has been running Canteen, a pop-up pay as you can community restaurant - check the website to see upcoming events.



FROME FOOD NETWORK DIRECTORY

fromefoodnetwork.co.uk/local-producers

Frome Food Network's Directory of local producers and retailers includes health food stores, vegetable box schemes, suppliers and producers of fruit, veg, dairy, meat and fish and more.



FROME FIELD 2 FORK

fromefield2fork.org

An inclusive community market garden, where people can connect with nature and each other, learn agro-ecological growing methods, gain healthy vegetarian cooking skills and access affordable locally grown food.



FROME ALLOTMENT ASSOCIATION

fromeallotments.co.uk

Frome Allotment Association runs eight allotments on behalf of the people of the town. The sites are leased from Frome Town Council.





COMMUNITY FRIDGE

edventurefrome.org/communityfridge

Every day the Community Fridge team collects surplus food from local shops, supermarkets and growers and makes it freely available for everyone in the community at fridges dotted across the town.



FROME FARMERS' MARKET

somesetfarmersmarkets.co.uk/markets/frome

Frome farmers' market takes place at Boyle's Cross in the centre of Frome from 9am-1pm every second Saturday of the month from February to December. You will find local growers and producers and great food.



COMMUNITY APPLE PRESS

sustainablefrome.org.uk/signpost/community-apple-press

Masses of apples and not sure what to do with them? You can hire a community-owned apple press from Sustainable Frome and make your own fresh juice or cider.



THE WALLFISH JOURNAL

thewfj.co.uk

Somerset's only newsletter dedicated to food, drink, farming and food culture with a focus on local food, farmers, growers and outlets.

LAND AND NATURE

Getting out into nature is great for our wellbeing and connects us to the precious natural resources and wildlife in and around Frome. When we spend time in nature we often feel more connected to the wellbeing of the Earth. You can find a list of local groups here: frometowncouncil.gov.uk/find/frome-living/community-groups-clubs-and-hobby-groups/nature-and-environment/

Some of the groups which link to the climate and biodiversity are:



BACK TO NATURE CIC

backtonaturecic.co.uk

Back to Nature aims to connect people with nature through the exploration of traditional nature-based crafts, foraging, food growing and cultivating a curiosity for the outdoors.



FROME SEED LIBRARY

fromeseedlibrary.org

Frome Seed Library supports people to collect and share locally grown seeds which are available in the Library building. The team organises events to get people of all ages growing and excited by fruit, vegetable and flower cultivation.



FROME WILD BUNCH

frometowncouncil.gov.uk/our-community/community/wild-bunch

The Wild Bunch promotes volunteering and gardening for wildlife in both private gardens and shared local green spaces and hosts monthly gatherings and public events.



COMMUNITY WILDLIFE MAPPING PROJECT

frometowncouncil.gov.uk/join-fromes-community-wildlife-mapping-project

You can help gather information for Frome's own interactive digital wildlife map – whether you are a resident or visitor – to help Frome Town Council (FTC) and Somerset Environmental Record Centre (SERC) so that they can plan for the future.



FROME RECREATION AND OPEN GROUND SUPPORTERS (FROGS)

fromefrogs.org.uk

FROGS is a community group of volunteers encouraging the use, protection and enjoyment of outdoor spaces in and around Frome, including bat and bird box building days and wildlife walks.



FRIENDS OF THE RIVER FROME

friendsoftheriverfrome.co.uk

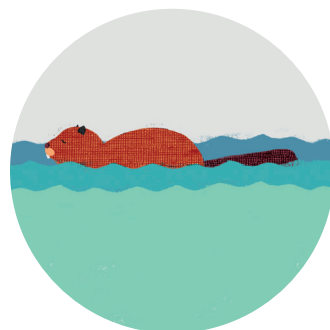
Friends of the River Frome is a community group of volunteers, and registered charity, that works to improve, protect and celebrate the Somerset river Frome.



RIVER VISION PROJECT

fromefamiliesforthefuture.co.uk/River-Vision-Project

The River Vision Project is part of Frome Families for the Future (see Family and Play above). Their vision is to create a vibrant and accessible River Frome that everyone can enjoy, and to inspire the local community to make small changes to improve the health of the river.





BROADWAY COMMUNITY GARDENS

broadwaycommunitygardens.com

This is a community garden open to everyone which gathers twice a week to promote community food growing, wildlife and biodiversity and wellbeing.



THE TREE GROUP FROME

facebook.com/groups/232007620669242/?locale=en_GB

The Tree Group Frome shares their knowledge and passion for trees and organises tree planting in the Frome area.



FOREST OF SELWOOD

forestofselwood.org

Forest of Selwood is a charity committed to reviving nature, reconnecting people with the landscape and ensuring climate friendly practices in the Forest of Selwood.



HEAL SOMERSET

facebook.com/healrewilding

Heal Somerset is a rewilding charity near Witham Friary (around 5.5 miles from Frome) where all are welcome to find out more about nature recovery, climate action and wellbeing.



SOMERSET WILDLIFE TRUST (SWT)

somersetwildlife.org/get-involved/take-action-nature

SWT provides information about how to make gardens and other land better for wildlife. You can also take part in SWT's Wilder Gardens scheme.





REFILL, REPAIR, REUSE AND RECYCLE

Don't know what to do with your old computer? Are you wondering how to compost? Do you need help with a repair? Thinking about what we really need and reducing our consumption are great for the planet while donating, refilling, repairing and reusing save both money and precious resources. Fortunately Frome has many opportunities to keep materials flowing around the town - also known as the 'circular economy'.



SHARE FROME

sharefrome.org

The SHARE shop is coming out of hibernation in 2026. SHARE is a 'library of things' where you can become a member to hire useful items at low cost before returning for the next person. SHARE has 800 items ranging from power tools to candy floss machines!



FROMEBASE

fromebase.com

Fromebase is a new community DIY store in Frome which stocks new and unused surplus DIY materials sourced from the construction industry and from local people. Everything on sale is high quality and low price, saving waste and money.



KEEP IT FROME

loopfrome.org/keepitfrome

Keep it Frome is a campaign to support and promote the circular economy in Frome. They have published a fantastic directory about growing, sharing, repairing and re-imagining in Frome which signposts to community groups, organisations and businesses.



LOOP

loopfrome.org

Loop:Frome collects local food waste and turns it into nutrient-rich compost to support soil health, contribute to the circular economy and strengthen sustainability in Frome. You can purchase waste collection services or buy their wonderful compost.



DONATE IT

frometowncouncil.gov.uk/directory/donate-it

Donate IT is an amnesty and repair service for unwanted tech items. There are collection points and events in Frome. Any equipment is cleaned of data and repurposed, repaired or recycled and usable kit is donated to people and communities who need it.



PLASTIC FREE FROME

frometowncouncil.gov.uk/our-community/our-sustainability-work/waste/plastic-free/

After voting to go single-use-plastic-free, Frome Town Council has phased out plastics and promotes alternatives through advice and access to bulk-buy schemes.



DENUDE

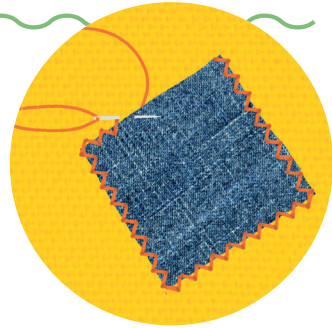
denudestore.co.uk

Denude offers a wide range of refills (food and household products) and products with minimal and recyclable packaging. Look out for other stores which offer refills around Frome to reduce plastic and save money.

See also Everyone Needs Pockets in Textiles and Clothing.

TEXTILES AND CLOTHING

Fashion is the second largest polluter on the planet, and the UK consumption of new clothing per head is 27kg, the highest in Europe. Find below a list of groups dedicated to sustainable fashion and textiles including repair, reuse and upcycling opportunities here in Frome.



EVERYONE NEEDS POCKETS

everyoneneeds pockets.org

Everyone Needs Pockets is a Frome based network committed to making sustainable fashion and textile use the norm, organising practical events such as weaving, sewing and mending, swaps and upcycling workshops. Sign up for their newsletter to stay in the loop.



EVERYONE NEEDS POCKETS DIRECTORY

everyoneneeds pockets.org/directory

A fantastic guide to textile reuse businesses and opportunities in and around Frome alongside guides and resources to help you repair and reuse.



THE FROME WARDROBE COLLECTIVE (FWC)

facebook.com/TheFromeWardrobeCollective

FWC organises clothes swaps where people can bring unwanted clothes and swap them for preloved alternatives. There is usually a small entrance fee and access to hundreds of items!



COMMUNITY LEARNING AND SOCIAL ENTERPRISE



EDVENTURE FROME CIC

edventurefrome.org

Edventure is a community social enterprise hub in Frome where the team works alongside local people to start and grow projects and enterprises that make a positive difference in Frome and beyond. Edventure does this through hands-on courses that turn ideas into action, hosting a friendly community coworking space, supporting community projects and facilitating groups that bring people together to make change.



THE FROME SHED

hugofox.com/community/frome-shed-12888/home

Find out about the Men's Shed and Women's Shed in Frome where you can learn or share woodworking and making skills using shared and recycled tools and materials, including building projects for the community. The Sheds are also a great place to connect!

TRAINING AND VOLUNTEERING

Training and volunteering will enable you to gain skills while contributing to Frome projects which are committed to reducing carbon and/or increasing biodiversity. These projects also benefit the community and could lead to friendships or a new career.



FROME TOWN COUNCIL

frometowncouncil.gov.uk/council/frome-town-council/jobs

You can volunteer at Frome Town Council to become an Energy Advice Champion, supporting people in Frome to make their homes more energy efficient and enabling them to access financial advice or support. You can also be trained in identifying fuel poverty to provide signposting to vulnerable people in your community or at work.



FROME COMMUNITY BIKE PROJECT

fromebikeproject.org/what-we-do/volunteering

Frome Community Bike Project, located near the train station, has plenty of volunteer opportunities both in the workshop and in the community. Roles vary from workshop mechanical support to assisting group bike rides or helping at events.



FROME COMMUNITY FRIDGE

edventurefrome.org/communityfridge

Frome's community fridge was the first in the UK...there are now 700! The community fridge reduces food waste and saves hundreds of tonnes of carbon every year by collecting surplus food from stores and producers and redistributing to everyone in the community. The fridge relies on volunteers year round to support the project.



WILD BUNCH

frometowncouncil.gov.uk/our-community/community/wild-bunch

The Wild Bunch is powered entirely by a small but mighty team of dedicated volunteers supported by Frome Town Council. They are always on the lookout for passionate wildlife enthusiasts and nature-loving gardeners. To get involved email fromewildbunch@gmail.com



FROME TOWN COUNCIL VOLUNTEER RANGER

frometowncouncil.gov.uk/join-ftc-volunteer-rangers

Become a Volunteer Ranger in Frome to help care for local green spaces, get active, learn new skills and meet others.



FROME TOWN COUNCIL VOLUNTEERING HUB

frometowncouncil.gov.uk/our-community/organisation-support/volunteer-frome

You will find other interesting volunteering opportunities here, many of which are great for people and planet.



MY FROME



myfrome.frometowncouncil.gov.uk/en-GB

My Frome is a new online resource launched in March 2026. My Frome is a friendly online space where you can share ideas, join conversations and get involved in the projects shaping our town - including climate, health and cost of living projects. You can sign up at any time to get involved.

RESOURCES FOR GREENER LIVING

If you are interested in taking action for our planet you can find out more on these sites:

- www.wwf.org.uk/updates/top-tips-reduce-your-plastic-footprint to reduce plastic use
- asustainablelife.co.uk for down to earth advice on living a greener lifestyle
- guides.giki.earth to find out about your carbon footprint and how to reduce it
- energysavingtrust.org.uk/top-tips-to-reduce-your-carbon-emissions for saving energy in your home and while travelling

If you would like to talk more to friends, colleagues or family about sustainability, but you are not sure where to start, this is a useful guide:

- climateoutreach.org/reports/how-to-have-a-climate-change-conversation-talking-climate

Thanks to the Green and Healthy Frome team and to our funders the National Lottery.

Written by: Becky Lovegrove, Solene Quandalle and Annabel Crooke at Green and Healthy Frome

Illustrations by: Jenna Herman @JennaDoodles

Designed by: Inkcapp Design



ABOUT GREEN AND HEALTHY FROME

greenhealthyfrome.org

This guide was published in March 2026 by the team at Green and Healthy Frome (GHF). GHF was a Lottery-funded project which was active in Frome between 2021 and March 2026, making the link between planet, pocket and health and supporting community-led climate action in Frome. The three partners in GHF were Edventure Frome, Frome Medical Practice and Frome Town Council.

Many elements of GHF continue today and other climate and health initiatives are emerging – this Directory is your gateway to finding out how you can get involved! You can find out about GHF by visiting our website where you can watch, read and listen to inspiring stories and find out what we did and what we learned. Thank you to everyone who made GHF happen, to everyone who got involved and especially to our funders at the National Lottery.





edventure 

 **Frome**
Medical Practice
SUPPORTING YOUR HEALTH

FrOme
TOWN COUNCIL

 **COMMUNITY**
FUND