

Frome Town Council Plan 2025-27

Executive Summary

Over the past few years, Frome Town Council has grown considerably in response to the evolving needs of our town. Our annual budget now stands at almost £4 million, and we own and manage 36 hectares of land across Frome along with a number of buildings. With this growth comes the need to strengthen the foundations to support us in the years ahead.

At the same time, we don't want to lose what makes FTC unique. That spark - the sense of possibility and innovation - is something we need to hold on to as the challenges facing our community continue to increase, and the future looks evermore uncertain.

We can't fill all the gaps left by national and county-level funding cuts, and nor should we try. Instead, we have an opportunity to draw on our experience in galvanising community action and building local capacity to chart a new course forward.

This strategy sets out our direction for the next two years. It builds on the foundations of the last three years and provides a framework to measure our impact and improve our performance. It reflects our continued commitment to making tangible improvements in the town, while recognising the quieter, behind-the-scenes work we do: the convening, collaborating, and strategic thinking that often goes unseen but underpins real, lasting change. It also reaffirms our commitment to participation and innovation - continuing to explore new ways for residents to get involved and help shape our shared future.

Together, these aims reflect a balance between responding to immediate pressures and planning for the long term. We recognise that Frome's greatest strength lies in its people — and that by working together, the town can remain inclusive, creative, and resilient in the face of uncertainty.

- Cllr Fiona Barrows

Grow community wellbeing

Grow a strong, connected, and resilient community where everyone feels they belong, our most vulnerable residents are supported, and people receive help before reaching crisis point.



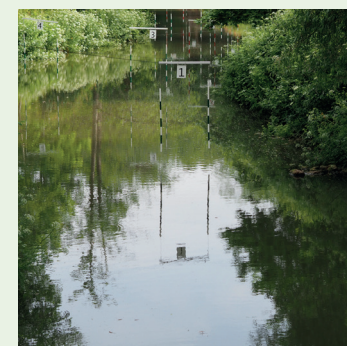
Support a thriving town

Foster a vibrant local economy with opportunities for young people, a thriving town centre, and investment in growth projects.



Cultivate environmental sustainability

Build environmental resilience by enhancing biodiversity, reducing emissions and waste, and adapting to the effects of climate change.



Improve assets and infrastructure

Ensure Frome's physical infrastructure and assets support future growth and community needs.



Be a bold and effective town council

Be a bold and effective council that uses resources wisely, innovates with purpose and is prepared to meet future challenges.

