

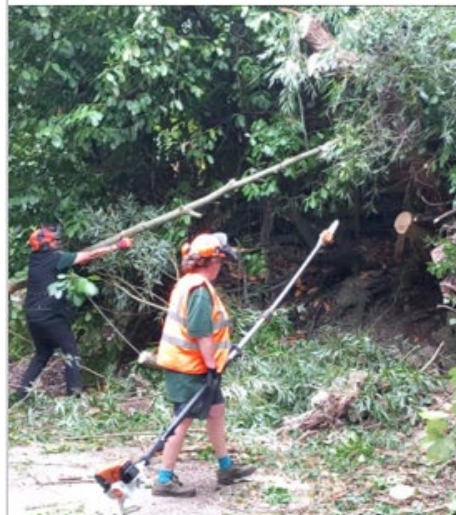
#### Agenda item 4

##### For information - Review of Nurture Open Spaces Work Programme

Author: Rob Holden, Environment Manager

The work programme is on track – see table below. Since the last update in September the key highlights are:

- **Town centre** – Westway taxi-rank bench installed, bench by Jenson Button bridge upgraded, graffiti reset following half term, Christmas tree and lights up
- **Adderwell** – Management plan written in conjunction with Friends of the River Frome (FoRF). Meadow habitat works and footpath management underway. Wetland scrape (improves water holding capacity and hence wetland ecological value) scheduled imminently, enabling works for site perimeter fencing (required under the terms of the sale) completed
- **Community Woodland** – Ground has been prepared (by shire horses) and meadow seed is in. Next step is path in January and tree planting in 2<sup>nd</sup> week of March, Community noticeboard to give updates on the project to be installed imminently
- **Showfield** – Management plan written
- **Devolved land** – first season of grass cutting ending, hedging work beginning. 9 sites have been planted with 10,000 bulbs by 400 members of local community (mostly school children). Included as a case study in Somerset Local Nature Recovery Plan – Jo Morris and Helen Viner
- **Ranger base** – security upgrades finished
- **Depot** – red diesel fuel store in, tractor just arrived
- **Winter tree safety** tree surgery about to start
- **St Johns and Tower View** play area refresh being planned
- **Broadway Community Garden** – Compost loo base built
- **Skatepark Project** – Fundraiser appointed, main contractor out to tender, aim is to appoint before new year and design workshops and high-profile fundraising plans from January



## Open Spaces Programme:

Project	Update	Status
Convene people who use our open spaces to ensure existing groups are represented but also to reach out to other users whom we have not yet engaged	Community led Skatepark proposal adopted by Council on 27 Aug 25 Co-design project for Mary Baily installation has been commissioned and is underway (team to be recruited Jan 26) Community led management plans for Showfield and Adderwell Water Meadow Community play areas having co-design refresh in St Johns and Tower View	
Work with the forum to consider resident involvement in the maintenance and development of open spaces	Ditto above	
Identify open spaces that we want to take on during the creation of the new Unitary	Most Devolution land now in FTC ownership (last few work in progress)	
Consider how FTC would service and maintain a growing number of open spaces	Depot now fully operational Ranger base made secure following break in	
Work with housing and planning to agree which open spaces should be maintained and which could be made available for housing	Ongoing	
Ensure our parks and open spaces are places that people value highly to enjoy, are accessible and inclusive, and support a wide range of outdoor activities and bio-diversity	Adderwell land habitat management has started, wetland scrape going in Nature recovery plan – community workshops undertaken and plan in preparation Community woodland – land works done, ground seeded with wildflower meadow seed. Path works Jan Bulb planting across devolved and existing FTC sites	
Other - Collaboration with partner agencies on land, works and maintenance across Open Spaces and the town	Active programme of works in town centre including planters, benches, graffiti reset, riverbank clearance Street Sweeper in active use	