

Act to Adapt Frome

Supporting communities across Somerset to adapt to climate change through a series of collaborative events



Shaping a plan for your community

Share your ideas for how Frome can adapt to Climate Change!

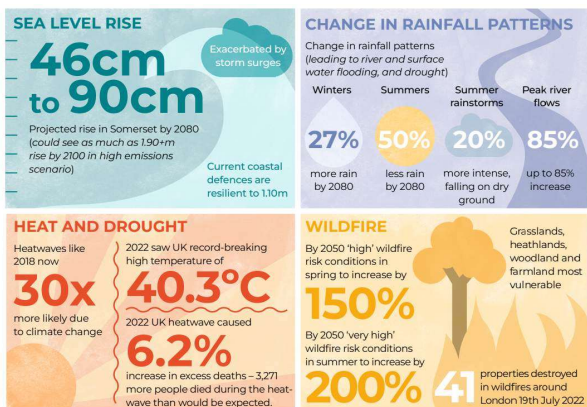
What is Adaptation?

Adjusting to the current impacts of climate change or planning for those that are projected.

Adaptation can seek to limit, avoid harm, or explore beneficial opportunities.



Why do we need to Adapt?



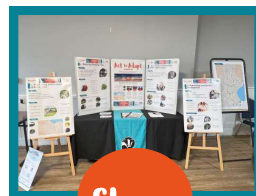
The process



Talk

A workshop to bring local people together to talk about areas at risk from climate change impacts and potential solutions to adapt.

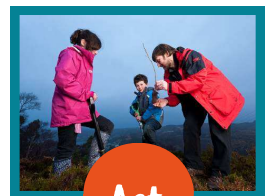
This is a community-wide effort – every voice and idea is valuable to feed into a Climate Adaptation Plan.



Shape

Through online and in-person opportunities, residents will get a chance to provide feedback and suggest other actions to be included in the climate adaptation plan.

This will ensure the plan is shaped by local voices and knowledge.



Act

The Climate Adaptation Plan will be launched with an event, bringing residents together to act and implement as many adaptations as possible!

The plan will:

- Guide future action
- Help to track progress
- Offer advice



Somerset
Wildlife Trust

SCAN ME TO
LEAVE FEEDBACK
ONLINE



FrOme
TOWN COUNCIL

Funded by Somerset
Rivers Authority



1 - Improving and increasing green spaces

Actions

- 1.1 - Increase tree planting**
- 1.2 - Build and enhance climate-resilient wildlife spaces**
- 1.3 - Create and enhance community-led green initiatives**
- 1.4 - Build soil health**



Benefits

Mitigates urban heat island effect

Provides shade and refuge

Improves water quality

Benefits health and wellbeing



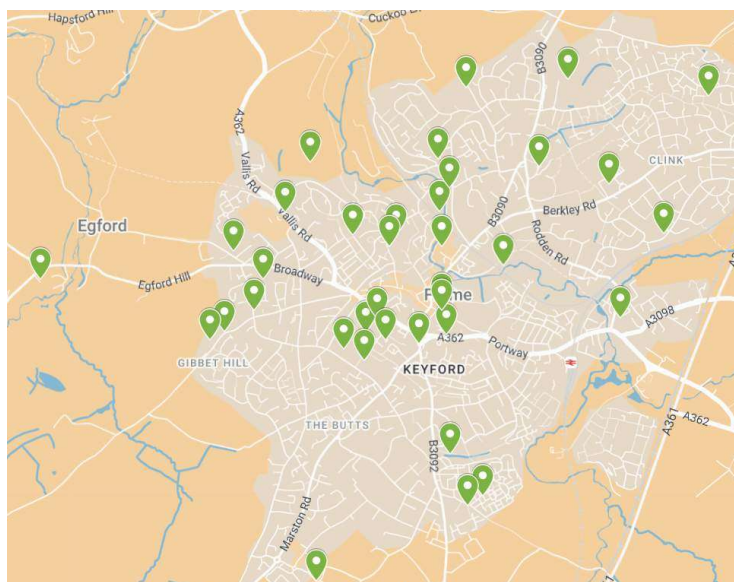
Captures and holds water above and below ground

Reduces stormwater runoff

Provides habitat for wildlife

Mitigates climate change

Locations





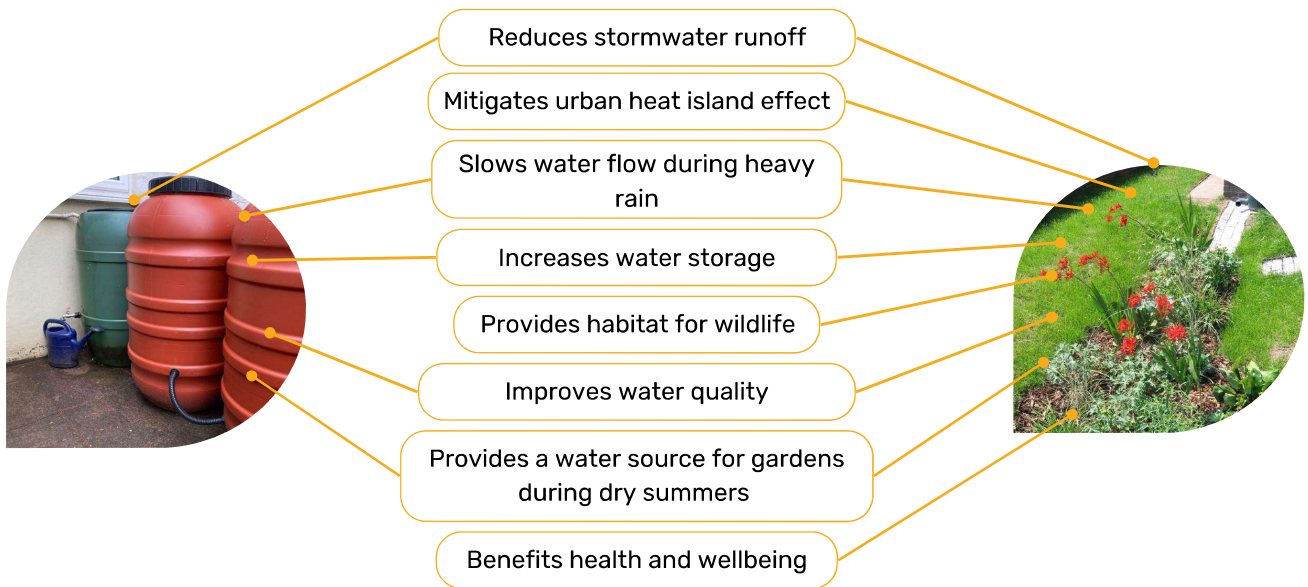
2 - Adapting to flooding

Actions

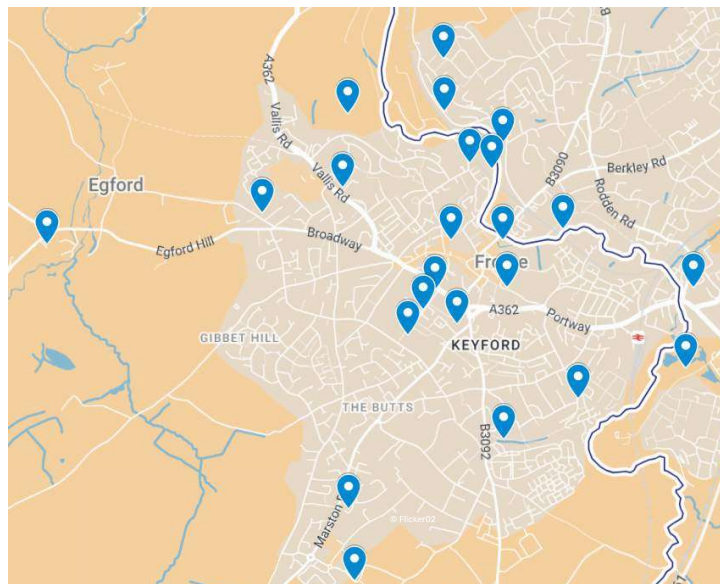
- 2.1 - Improve drainage infrastructure**
- 2.2 - Encourage rainwater harvesting and use**
- 2.3 - Implement natural flood management techniques**
- 2.4 - Create wetland habitat**
- 2.5 - Restore river functions**



Benefits



Locations





3 - Sharing knowledge and raising awareness

Actions

- 3.1 - Create solution-focused communications to engage new audiences**
- 3.2 - Connect and support community groups**
- 3.3 - Develop a positive future vision for broader participation**
- 3.4 - Run regular climate engagement events**
- 3.5 - Engage with schools**
- 3.6 - Create emergency response plans and safe spaces**



Benefits

Raises climate awareness

Motivates sustainable actions

Supports green economy

Enables youth leadership



Builds community collaboration

Facilitates open dialogues

Supports sustainable living

Enables informed choices

Possible projects

Here are some ideas for projects suggested by local residents:



Build on neighbourhood networks like Transition Streets Frome, focusing on climate adaptation



Encourage hyper-local action like lifting paving slabs and water butts



Identify a vision, hold an imaginarium



Share emergency planning information regarding what to do for food, water and shelter



4 - Planning and development for nature and food

Actions

4.1 - Review planning policies and lobby for climate resilient development

4.2 - Co-create a master plan for climate-resilient town infrastructure

4.3 - Co-create local food resilience plan

4.4 - Create community farms and food growing education programmes



Benefits

Enhances climate resilience

Fosters collaboration

Increases environmental literacy

Involves the community



Supports sustainable living

Reduces extreme weather impacts

Protects communities' future

Promotes environmental stewardship

Possible projects

Here are some ideas for projects suggested by local residents:



Community farms and educate on food growing



Draw on local expertise and collaborate with local citizens



Lobby for future developments and retrofitting of existing buildings to be climate resilient



Grow food resilience and surplus by expanding growing spaces using gardens, suitable indoor spaces and water confluences

Locations



Improving and
increasing green
spaces



Reducing flood
risks

