



# Recycle More: What do we collect?



## Plastic bottles



### Yes, please!

- ✓ Any colour: Clear, coloured or opaque.
- ✓ Plastic bottles for milk, juice, sauce, water, soft drinks.
- ✓ Bottles for bleach, shampoo, cleaning products.

### No, thanks!

- ✗ Spray nozzles and trigger tops, like those on cleaning products.
- ✗ Pumps like you might see on liquid soap bottles.

### Tips

- Rinse and squash
- Leave the lids on, both screw cap and flip-cap
- Plastic bottles are also taken at recycling sites

## Plastic pots, tubs and trays



- ✓ Any colour: clear, coloured or opaque.
- ✓ Food, such as yoghurt, margarine, ice cream, ready meals, meat and vegetable trays, fruit punnets.
- ✓ Non-food, such as cosmetic creams, hair gel, laundry tablet boxes.

- ✗ Plastic film covering trays of food.
- ✗ Plastic bags, clingfilm, bubble wrap.
- ✗ Crisp packets and pet food sachets.
- ✗ Thick plastic, such as toys and storage crates.
- ✗ Polystyrene/expanded polystyrene.

### Tips

- Take extra care with trays that contained raw meat
- Rinse and squash
- Remove any foil, film and cardboard

# Metal packaging

## Yes, please!



- ✓ Steel or aluminium tins and cans.
- ✓ From food or drink, for example, soup or soft drinks.
- ✓ Empty aerosols.
- ✓ Kitchen foil and trays.

## No, thanks!

- ✗ Cutlery.
- ✗ Pots and pans.
- ✗ Biscuit tins.
- ✗ Metal tools.

### Tips

- Rinse tins and cans
- Leave nozzles on aerosols and labels on tins and cans
- Rinse and scrunch up foil

## Glass bottles and jars



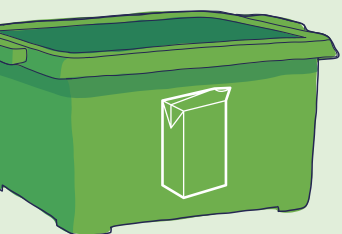
- ✓ Any colour: Clear, coloured or opaque.
- ✓ From food and drink, such as wine bottles and jam jars.
- ✓ Non-food items such as cosmetics and empty medicine bottles.

- ✗ Broken glass.
- ✗ Window glass.
- ✗ Drinking glasses.
- ✗ Cookware such as Pyrex or similar.

### Tips

- Rinse
- Leave lids on, plastic or metal

## Cartons



- ✓ Food and drink cartons, including Tetra Paks.
- ✓ Fruit juice, milk, non-dairy milk and soup cartons.

- ✗ Single-use tea or coffee cups (can go to 12 recycling sites).
- ✗ Compostable or bio-degradable cups or other packaging (put in your rubbish).

### Tips

- Rinse and flatten
- Leave the lids on

# Paper

## Yes, please!



- ✓ Newspapers and magazines.
- ✓ Leaflets and junk mail.
- ✓ Catalogues and directories.
- ✓ White envelopes, with or without windows.

## No, thanks!

- ✗ Padded envelopes, like Jiffy bags.
- ✗ Books.
- ✗ Plastic film packaging around magazines.

### Tips

- Keep paper and card separate
- Books that cannot be reused or donated can go to recycling sites
- Shredded paper can go in tied carrier bags

# Cardboard



- ✓ Brown or white corrugated cardboard boxes.
- ✓ Thin card, such as cereal and washing powder boxes, ready meal sleeves.
- ✓ Egg boxes.
- ✓ Toilet and kitchen roll tubes.
- ✓ Brown envelopes, with or without windows.

- ✗ Plastic film packaging.
- ✗ Polystyrene or other packaging.

### Tips

- Flatten boxes, cut up larger pieces
- Take large quantities to recycling sites
- We can collect the equivalent of two extra recycling boxes of cardboard

# Food waste



- ✓ All food.
- ✓ Cooked and raw.
- ✓ Meat, fish and bones.
- ✓ Dairy produce.
- ✓ Tea bags and coffee grounds.
- ✓ Paper kitchen towel.

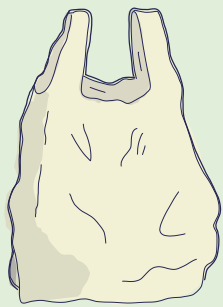
- ✗ Pet litter or poo.
- ✗ Any food packaging, including "compostable" containers.
- ✗ Flowers.
- ✗ Garden waste.
- ✗ Liquids and cooking oils (cooking oils can be taken to recycling sites).
- ✗ Tissues.

### Tips

- Line caddy with compostable liners or newspaper, not plastic bags
- Freezer breakdown? Double-bag spoilt food in its packaging and take to recycling site

## Small household batteries

### Yes, please!



- ✓ From appliances, torches and toys.
- ✓ Includes AAA, AA, C, D, etc.
- ✓ Camera batteries.
- ✓ Small SR batteries from watches or small toys.
- ✓ Lithium batteries from computers and phones.

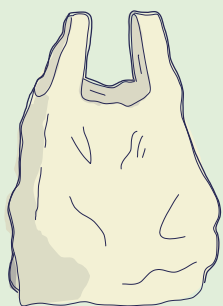
### No, thanks!

- ✗ Batteries from any vehicles: cars, motorbikes, mobility scooters, golf buggies or trolleys.

### Tips

- In a small, tied bag on top of recycling
- Vehicle batteries can go to one of our recycling sites

## Small electrical items



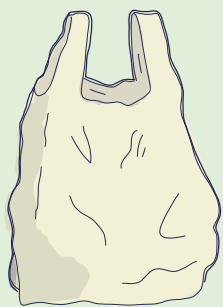
- ✓ Any item that had a plug or batteries (even if removed).
- ✓ Small enough to fit inside a carrier bag.
- ✓ Kettles, toasters, hair dryers.
- ✓ Laptops and phones.

- ✗ Televisions or computer monitors.
- ✗ Anything larger than a carrier bag.

### Tips

- In an untied bag (not a black sack) beside recycling containers
- Crews will return bags
- Wipe personal data that risks identity theft

## Clothes and shoes



- ✓ Wearable clothes and shoes, of good enough quality to be worn again.

- ✗ Bedding, curtains, towels or any other textiles.
- ✗ Poor quality clothes and shoes.

### Tips

- In tied plastic bag, not black sacks (so we know it is not rubbish)
- Only put out on a dry morning
- Charity shop or collection is the best option