



Frome Town Council Climate Action Group

25 January 2022

CLIMATE AND ECOLOGICAL EMERGENCY

Frome Town Council declared a Climate Emergency in December 2018 with target to become carbon neutral by 2030

Climate panels held in November 2019 with 150 Frome residents on themes of Energy, Transport & Resources

Climate Emergency Strategy & Action Plan published March 2020

Ecological Emergency declared August 2021

Today: Review and plan for coming year



Strategy & updates plus other resources can be found at www.frometowncouncil.gov.uk

AGENDA

7pm	Welcome
7.10	Introductions to Resilience team
7.25	Intro Jacob Hall, Mendip District Council
7.30	Group exercise #1 (breakout rooms)
7.45	Group exercise #2 (breakout rooms)
8pm	Feedback from group sessions
8.10	What Next? Sustainable Frome Future Shed Action Group signup
8.25	Questions and final comments

ICEBREAKER

- What do we already do well as a town to address the Climate & Ecological Emergency?
- What are the biggest challenges we face as a town in addressing the Climate & Ecological Emergency?
- What is one thing you would like to do, individually or as a community, in response to the Climate & Ecological Emergency?



Updates from Frome Town Council Resilience Work Programme



ENERGY

Healthy Homes

- Part of Lottery funded Green & Healthy Futures Programme
- Advice & training on home energy in partnership with the Centre for Sustainable Energy
- Letters sent out to patients through Frome Medical Practice
- Medical Practice staff signposting to service
- Monthly advice drop-ins, webinars
- Training Healthy Homes volunteers in the community



ENERGY

Solar Streets

- Discounted solar offer for Frome residents, saving an average of £1500 on initial cost
- Substantial energy saving over lifetime of panels
- 100 Frome homes installed
- Scheme now rolled out across South West



ENERGY

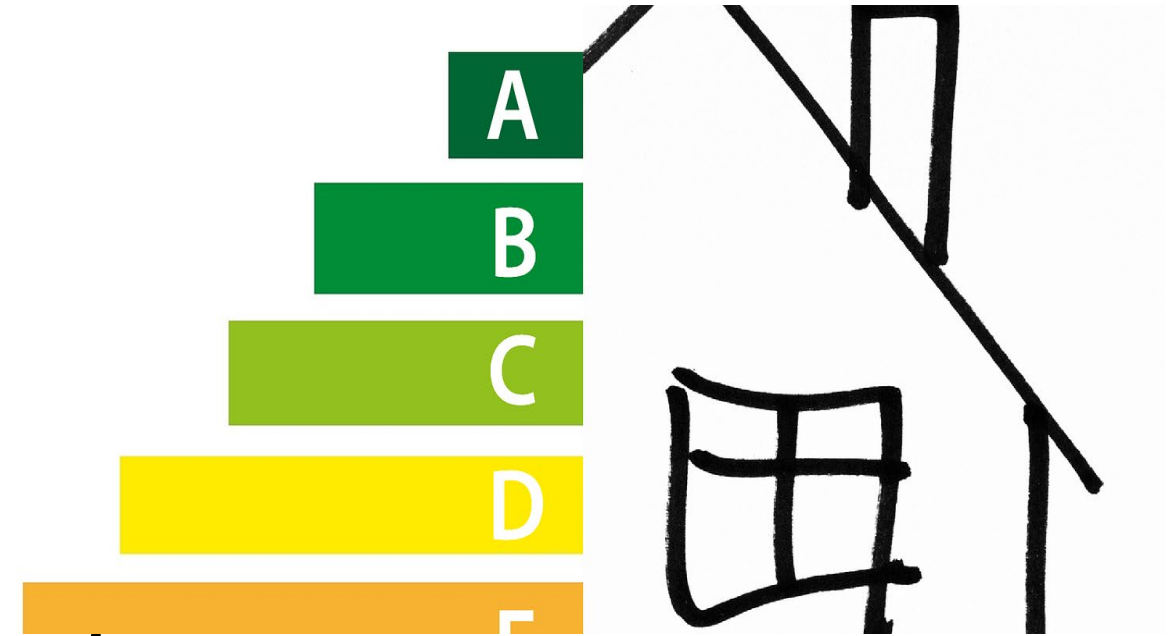
Town Hall Energy Efficiency project

- LED lighting
- Draughtproofing
- Solar PV

Exploring feasibility of local large-scale renewable energy projects with Frome Renewable Energy Cooperative (FRECO)

Somerset Retrofit Accelerator project- focused on whole-house retrofit & supply chain

Energy Sparks: Working with schools to understand and reduce their energy use including curriculum linked activities



TRANSPORT- School Streets

- School Streets make it easier and more attractive to travel actively by creating safer and more pleasant environments for walking and cycling
- The aim is to:
 - Increase active lifestyles
 - Improve safety
 - Improve air quality
 - Reduce traffic volume and speed



TRANSPORT- School Active Travel Challenge

School Active Travel Challenge

- 20% increase in active journeys
- Week of incentives, activities, prizes and data collection
- 2022: introduce Modeshift Stars national award scheme



TRANSPORT

[Cycle Together](#)

- E-bike loan and cycle confidence classes
- Part of the Lottery funded [Green and Healthy Futures programme](#)

[E-bike hire scheme](#)

- Half or full day rental

[Bike Jumble](#)

- ~100 bikes plus accessories donated
- £3000 raised for [Frome's Missing Links](#)



TRANSPORT

Local Cycling and Walking Infrastructure Plan

- Network plan of safe walking and cycling routes

[Co-Wheels Car Club](#)

- Frome Town Hall & Alexandra Road

[Frome Station Friends](#)

- Maintain, improve and develop Frome train station

[Walkers are Welcome](#)

- Maintain and improve footpaths and facilities

[Active Travel Newsletter](#)

[Clean Air Frome](#)

Air sensors and website created by Frome Tech Shed



BIODIVERSITY - Community Wildlife Mapping

- Partnership project with Somerset Environmental Record Centre (SERC) to establish town-wide baseline for biodiversity in our green spaces and in private gardens.
- Encouraging people to get outdoors, connect with nature and take positive actions for wildlife.
- The data gathered will inform our management plans for our parks and green spaces, as well as our climate & ecological emergency strategy and action plan.

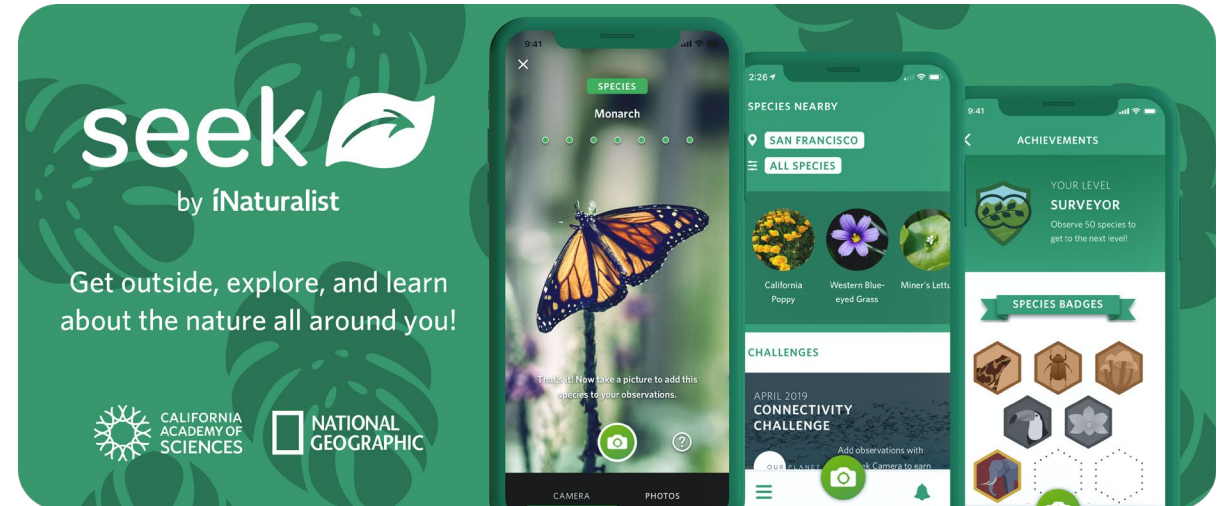


[More info: Wild about Frome - Frome Town Council](#)

[Join Frome's community wildlife mapping project - Frome Town Council](#)

BIODIVERSITY - Community Wildlife Mapping

- 1. Create a free account on iNaturalist and join the Frome project <https://uk.inaturalist.org/projects/frome-town>
- 2. Download Seek app by iNaturalist to your smartphone and link it to your iNaturalist account
- 3. Start recording!



BIODIVERSITY – Wild About Trees

- 27,000 trees in the next few years – one for every Frome resident
- Tiny Forests
- [More info: Wild about Trees - Frome Town Council](#)



BIODIVERSITY – The Wild Bunch

- “If all UK gardens were turned into nature-friendly places, it would create a wildlife haven of over 430,000 hectares in size, more than four times the surface area of all national nature reserves combined.”
- The Wild Bunch is open to anyone who is interested in gardening for wildlife in our private gardens and shared local green spaces.



[More info: Wild Bunch - Frome Town Council](#)

ZERO WASTE– Plastic Free Communities

- Working with businesses, schools and other community allies to retain our Plastic Free Community Status

[More info: Plastic Free - Frome Town Council](#)

PLASTIC FREE
—FR@ME—
SURFERS AGAINST SEWAGE

ZERO WASTE– Plastic Free. Period

- Funded by Mendip's CEE Fund and delivered in partnership with Frome Medical Practice
- Community wide campaign encouraging use of sustainable menstrual products – workshop 3rd February, free period pants distributed via Fair Frome, discounts from local shops and online for residents who pledge
- Positive Period workshops delivered to 4 middle schools in town reaching over 1000 students



[Plastic Free. Period. - Frome Town Council](#)

Coming soon – PPE recycling scheme trial

- Promote reusable masks as a priority
- Provide recycling points around town for disposable masks, lateral flow tests, gloves etc
- The waste can be recycled into boards that are made into bins, children's chairs, outdoor furniture & building materials.



COMMUNICATIONS- General responsibilities

- Work with the Communications team on Resilience-related events, actions and plans
- Take on press work for resilience-related news and events
- Make social media posts relating to resilience
- Assist with events organisation

COMMUNICATIONS- Planning Guidance



- [The Planning Guidance](#) advises new builds on how to reach and exceed energy efficiency standards. It has been adopted in Frome.
- It was shared with all Councils across the South West.

COMMUNICATIONS-Frome 2030

• A GREEN AND HEALTHY FUTURE FOR FROME •

FROME TIMES

IN THE YEAR 2030

THE TOWN'S OWN INDEPENDENT NEWSPAPER

Issue No. 827 • Thursday 14th November 2030 • @frometimes f /frometimes

A vision of how Frome could look in 2030

A special wraparound of your Frome Times to coincide with COP26.

Frome resident is youngest ever to complete record-breaking cycle route



15-year-old Ben, aged 15, has become the youngest person to complete the 100-day, 10,000-mile 'Frome to London' cycle challenge. Ben, who lives in Frome, started his journey in the town and has been making steady progress, completing the route ahead of his peers. His journey is a testament to his dedication and love for cycling.

BATH STREET FULLY PEDESTRIANISED



The town's main thoroughfare has been fully pedestrianised, a long-awaited change that will improve safety and encourage more walking and cycling. The new layout includes wider pavements, more greenery, and better crossings for pedestrians.

'The Children's Forest' fires the imagination

A new initiative to create a 'Children's Forest' in Frome has been launched, aiming to inspire young people's interest in nature and the environment. The project involves planting native trees and creating a space for children to learn about local wildlife and ecosystems.

COP 35 COMES TO FROME

The town is set to host the 35th annual COP conference, a significant event that will bring together global leaders to discuss climate change and sustainable development. Frome will be a key location for the event, showcasing its commitment to sustainability.

ACTIVE TRAVEL ACCELERATES IN FROME



The town's active travel network is expanding rapidly, with new cycle lanes and pedestrian paths being developed to encourage more people to walk and cycle. The council is also promoting various initiatives to support active travel, such as bike repair stations and walking groups.

Library of Things spreads nationwide

The 'Library of Things' concept, which allows people to borrow tools, equipment, and other items from a community library, has spread across the country. Frome's library is a pioneer in this movement, providing a valuable resource for the community.

A special wraparound produced by Edventure:Frome, Frome Town Council, Sustainable Frome.

www.frometimes.co.uk

FROME SPORT

Frome United women's team kitted out in recycled plastic

FROME United women's team have been awarded a special kit made from recycled plastic, a move that reflects the club's commitment to sustainability. The kit is made from 100% recycled plastic bottles and is a testament to the club's efforts to reduce its environmental impact.

LOOKS TOO GOOD TO BE TRUE?

Frome United women's team kitted out in recycled plastic

FROME United women's team have been awarded a special kit made from recycled plastic, a move that reflects the club's commitment to sustainability. The kit is made from 100% recycled plastic bottles and is a testament to the club's efforts to reduce its environmental impact.

WORDS FROM THE PEOPLE OF FROME

MARK AS READ

There's some very important news. Whether you see this or not, you can always find it on the 1st of Nov. But if you don't, it's not all that news.

The planet is dying. Despite people trying.

Your goals are out the 2030. Which means that's all off. You need to start being more healthy.

You are still working to find this. But you can't find it here. You have to look up. You have to look up. You have to look up.

Everything on this planet is broken. It's not just the planet, it's the people. It's not just the planet, it's the people. It's not just the planet, it's the people.

You need to start being more healthy. You need to start being more healthy. You need to start being more healthy.

You need to start being more healthy. You need to start being more healthy. You need to start being more healthy.

WHAT CAN I DO?

1. Switch electricity provider. Electricity is made up of 100% renewable energy. Switching to a green provider is a simple way to reduce your carbon footprint.

2. Switch to a green provider. Electricity is made up of 100% renewable energy. Switching to a green provider is a simple way to reduce your carbon footprint.

3. Switch to a green provider. Electricity is made up of 100% renewable energy. Switching to a green provider is a simple way to reduce your carbon footprint.

4. Switch to a green provider. Electricity is made up of 100% renewable energy. Switching to a green provider is a simple way to reduce your carbon footprint.

5. Switch to a green provider. Electricity is made up of 100% renewable energy. Switching to a green provider is a simple way to reduce your carbon footprint.

6. Switch to a green provider. Electricity is made up of 100% renewable energy. Switching to a green provider is a simple way to reduce your carbon footprint.

7. Switch to a green provider. Electricity is made up of 100% renewable energy. Switching to a green provider is a simple way to reduce your carbon footprint.

8. Switch to a green provider. Electricity is made up of 100% renewable energy. Switching to a green provider is a simple way to reduce your carbon footprint.

9. Switch to a green provider. Electricity is made up of 100% renewable energy. Switching to a green provider is a simple way to reduce your carbon footprint.

10. Switch to a green provider. Electricity is made up of 100% renewable energy. Switching to a green provider is a simple way to reduce your carbon footprint.

10 WAYS YOU CAN TAKE ACTION TODAY

1. Switch electricity provider. Electricity is made up of 100% renewable energy. Switching to a green provider is a simple way to reduce your carbon footprint.

2. Switch to a green provider. Electricity is made up of 100% renewable energy. Switching to a green provider is a simple way to reduce your carbon footprint.

3. Switch to a green provider. Electricity is made up of 100% renewable energy. Switching to a green provider is a simple way to reduce your carbon footprint.

4. Switch to a green provider. Electricity is made up of 100% renewable energy. Switching to a green provider is a simple way to reduce your carbon footprint.

5. Switch to a green provider. Electricity is made up of 100% renewable energy. Switching to a green provider is a simple way to reduce your carbon footprint.

6. Switch to a green provider. Electricity is made up of 100% renewable energy. Switching to a green provider is a simple way to reduce your carbon footprint.

7. Switch to a green provider. Electricity is made up of 100% renewable energy. Switching to a green provider is a simple way to reduce your carbon footprint.

8. Switch to a green provider. Electricity is made up of 100% renewable energy. Switching to a green provider is a simple way to reduce your carbon footprint.

9. Switch to a green provider. Electricity is made up of 100% renewable energy. Switching to a green provider is a simple way to reduce your carbon footprint.

10. Switch to a green provider. Electricity is made up of 100% renewable energy. Switching to a green provider is a simple way to reduce your carbon footprint.

FROME COMPOST

FROME COMPOST is a community initiative to collect and compost organic waste, reducing landfill and creating a valuable resource for the town. The scheme is open to all residents and is a great way to contribute to the town's sustainability efforts.

FROME BUSINESSES GET GOLD

FROME BUSINESSES GET GOLD is a scheme to encourage businesses to adopt sustainable practices and earn a 'Gold' rating. The scheme is open to all businesses in Frome and is a great way to show your commitment to sustainability.

FROME DECLARES ENERGY INDEPENDENCE!

FROME has declared energy independence, a significant milestone for the town. This means that Frome is now able to produce all the energy it needs from renewable sources, reducing its reliance on fossil fuels and contributing to the fight against climate change.

MOVES

Make a move with your car. Frome is a town of movers, and we encourage you to make a move with your car. Whether you're looking for a new car or a new way to move, we have the solutions for you.

FROME DECLARES ENERGY INDEPENDENCE!

FROME has declared energy independence, a significant milestone for the town. This means that Frome is now able to produce all the energy it needs from renewable sources, reducing its reliance on fossil fuels and contributing to the fight against climate change.

- [The Frome 2030 wraparound](#) presented a vision of how Frome could be in the future if the climate crisis is addressed sufficiently.
- Content came from community members as well as from us.
- Everyone in Frome saw the striking green front page.

COMMUNICATIONS-Great Big Green Week



- [The Great Big Green Week](#) saw nine days full of events of all kinds of environmental activity, from walks to plastic free picnics, from film screenings to me insulation programmes

COMMUNICATIONS-Other projects



- [The Walking Festival](#) kept hundreds of residents active.
- [Ebikes for hire](#) usage dropped off over the pandemic, so we are conducting renewed efforts to promote them.
- Worked with Friends of the River Frome to host the [Rivercide film screening](#) and panel discussion

AGENDA

7pm	Welcome
7.10	Introductions to Resilience team
7.25	Intro Jacob Hall, Mendip District Council
7.30	Group exercise #1 (breakout rooms)
7.45	Group exercise #2 (breakout rooms)
8pm	Feedback from group sessions
8.10	What Next? Sustainable Frome Future Shed Action Group signup
8.25	Questions and final comments

Breakout rooms

2x 15 minute sessions

Energy	Transport
Zero Waste	Biodiversity

What next?

- Intros & updates to Sustainable Frome
- Intros & updates from Future Shed
- Sign up to Climate Action Group & Subgroups- to meet quarterly
- Next meeting in April- partnering with Future Shed to look at our green spaces

Questions & final comments

