

Agenda item 3

For information and discussion – Boyle Cross Phase 3

Author: Jane Llewellyn, Planning & Development Manager and Rachel Griffin, Communications Manager

Summary of feedback from stakeholders meeting 1 July 2021

The meeting was attended by local businesses, representatives of the Farmers Market, Independent Market, Civic Society, Chamber of Commerce and Frome Town Councillors. In total there were 20 people at the meeting.

At the meeting Cllr Dove talked through the work that had already been carried out and shared the current design of the planters and seating and noted that some stakeholders had not had the opportunity to feed into these designs and that the proposals have been put on hold to enable further engagement to be carried out.

Vision

The stakeholder group were asked to give us their thoughts/vision for the site and how they feel it should be used.

Using Jamboard – here is the feedback received



Following the exercise there was a further discussion around what had been posted on Jamboard.

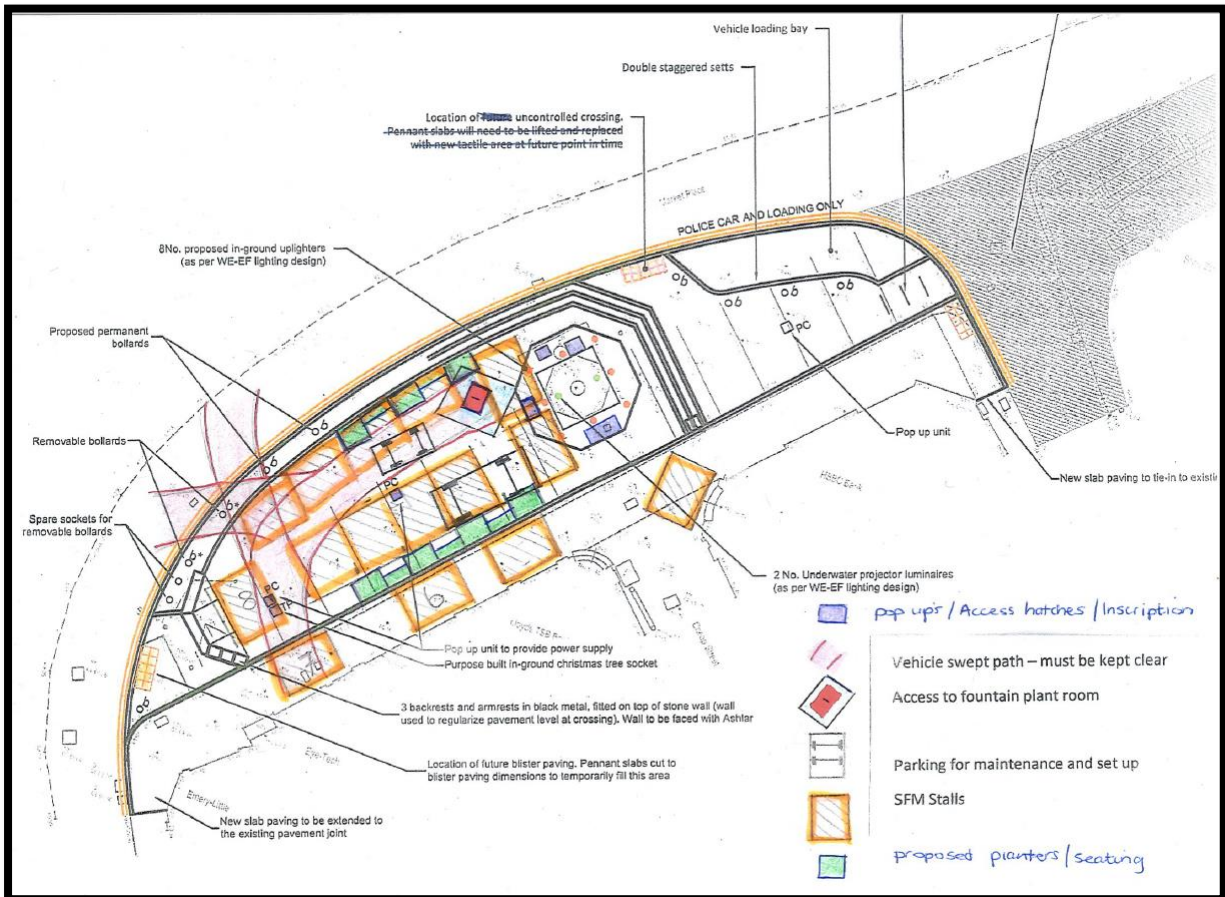
The key messages from that discussion were -

- Need some seating
- Any scheme needs to be flexible

- Need to ensure that Markets can continue
- Make the site safer
- The space needs greening

Constraints

As well as being a sloping site (in more than one direction), the Boyle Cross area has many constraints that restrict the areas where seating and planters can be placed. Before moving on to possible solutions, the planning and development manager went through the constraints as set out on the sketch plan below.

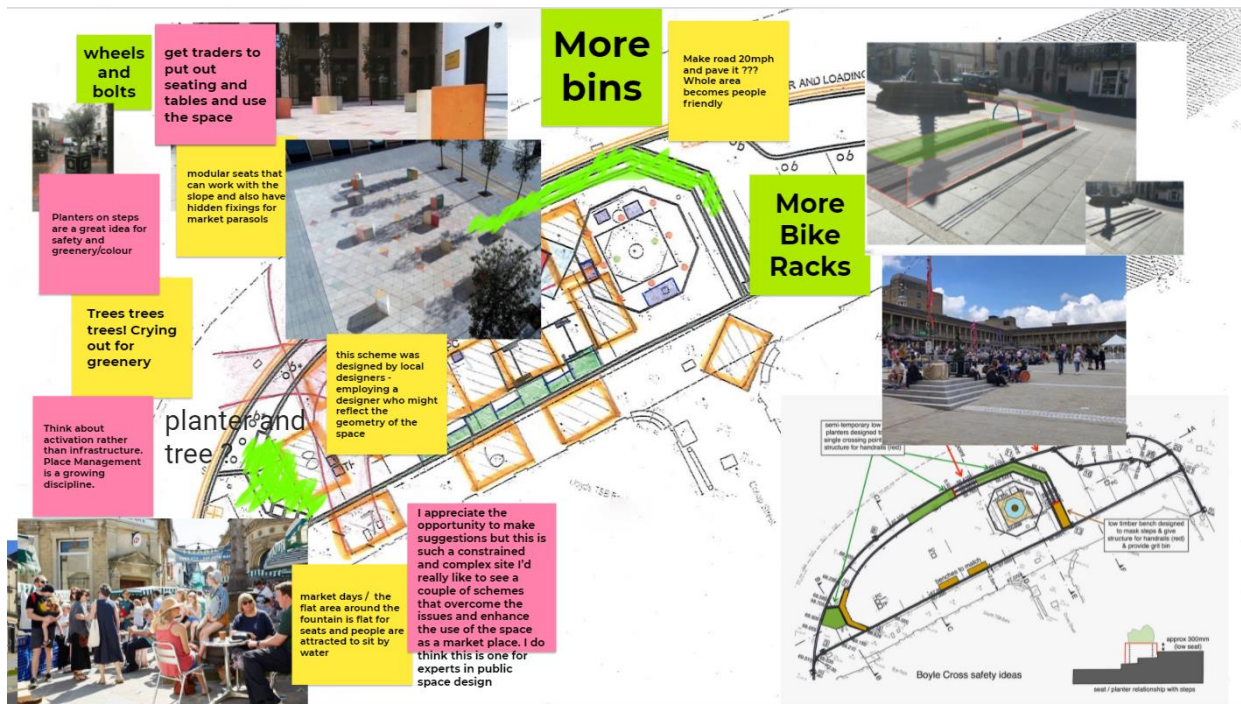


The constraints map includes –

- The layout of the Farmers Market
- Pop up units/access hatches/inscription
- Access to fountain plantroom (twice weekly)
- Vehicle swept path
- Parking for maintenance and market set up
- Position of proposed planters/seating

Ideas

Stakeholders were then asked for their ideas about how the site could be developed taking into account the constraints, again using Jamboard the ideas posted are shown below.



Following the exercise there was a further discussion around what had been posted on Jamboard.

The key messages from that discussion were –

- Any solution must be flexible and not inhibit the space
- Need to look more closely at how the site is managed and understand how the space will be used
- Trail something before making it permanent to make sure it works for everyone
- Consider fixed parasol points to serve both FTC stalls and the SFM stalls

Engagement days on Boyle cross

On Wed 14 & Thurs 15 July, we spent time on Boyle Cross with seating and planting and dressed the space using birch trees, bistro sets and solid boxes from the yard and invited the public to experience the cross with seats and more greenery, to rearrange, to on sit and to comment. The word cloud is visual representation of what we heard.

As hoped, most people were delighted to hear that we were looking at seating and planting – but similarly almost everyone felt that the markets should not be affected. Most people were surprised at the impact just a relatively small amount of green could make – we had 20 small birch trees in pots and 10 small laurel plants to be indicative rather than suggested planting.

Only three people were emphatic that the entire space should be given over entirely to non-marketplace activity – wanted the entire space rewilding, one café owner insisting that there should just be lots of seats, and someone else who wanted the space rewilded. Again, a majority of people who had seen the marketplace on the previous Saturday in person or in images had suggested that it was really good for the town and nice to see.

Most people said that it was pleasant to sit round the fountain, those who tried the low seats said that they were effective and surprisingly solid, and that it would be nice to have an extra seating option at the top. We also heard from several people that sitting with their back to the traffic felt precarious.

At the same time our business project officer went into businesses to ask them what they felt was needed. Broadly they agreed with the public.

Liz, who had taken part in the stakeholder meeting has some mobility issues tried all the seating and said that she felt that the low seats were an excellent idea to accommodate all users of the space. Choc et al, the chocolate shop on Cheap Street had said whatever we do please do not impact the markets. And John the baker had said the whole space was so much improved from the carpark days that he thought that whatever we do there is great. So that was nice!

Word Cloud of comments received



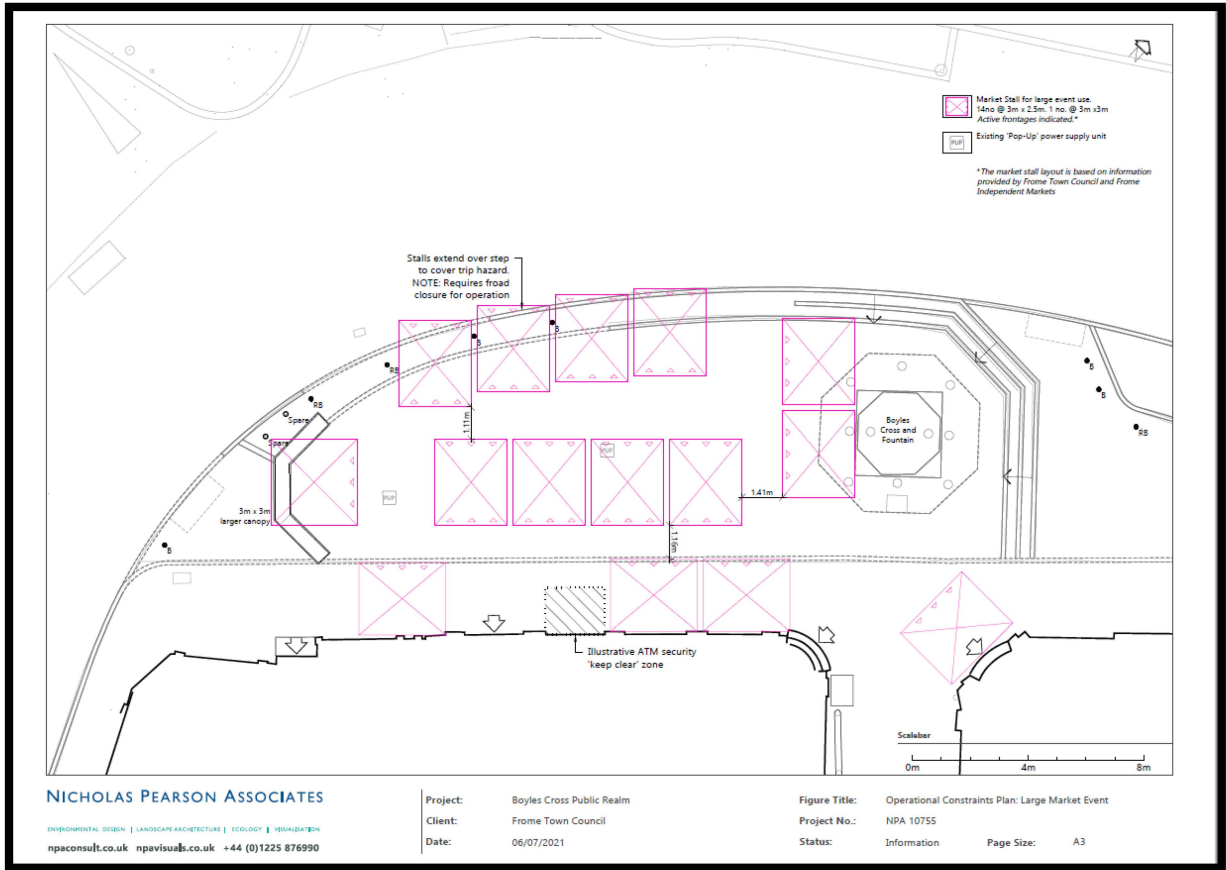
Images of the standalone Farmers Market on 10th July



Constraints & residual space plans

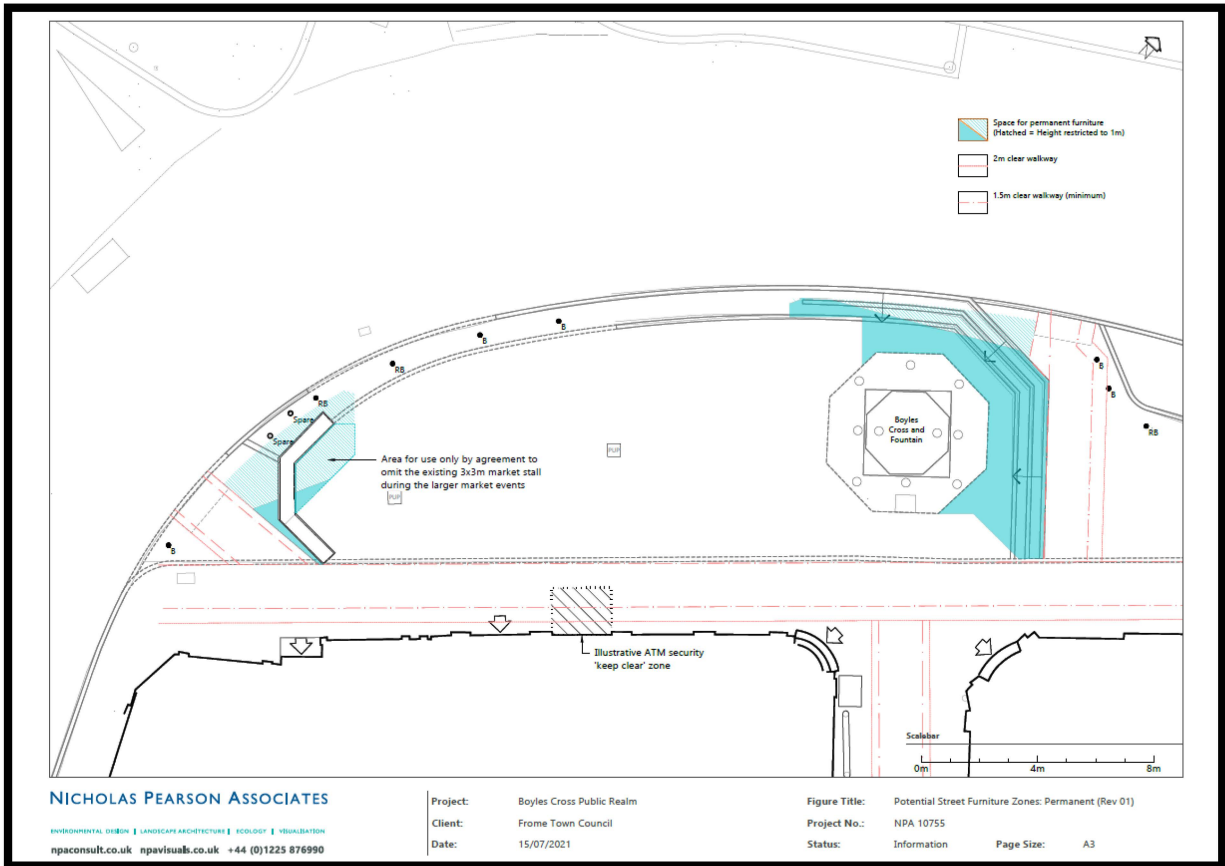
Nicholas Pearson Associates have now accurately plotted all the constraints and produced a series of plans so that they can accurately plot the residual space where planters and seating could be placed.

Plan of Somerset Farmers Market layout (top half of site only)

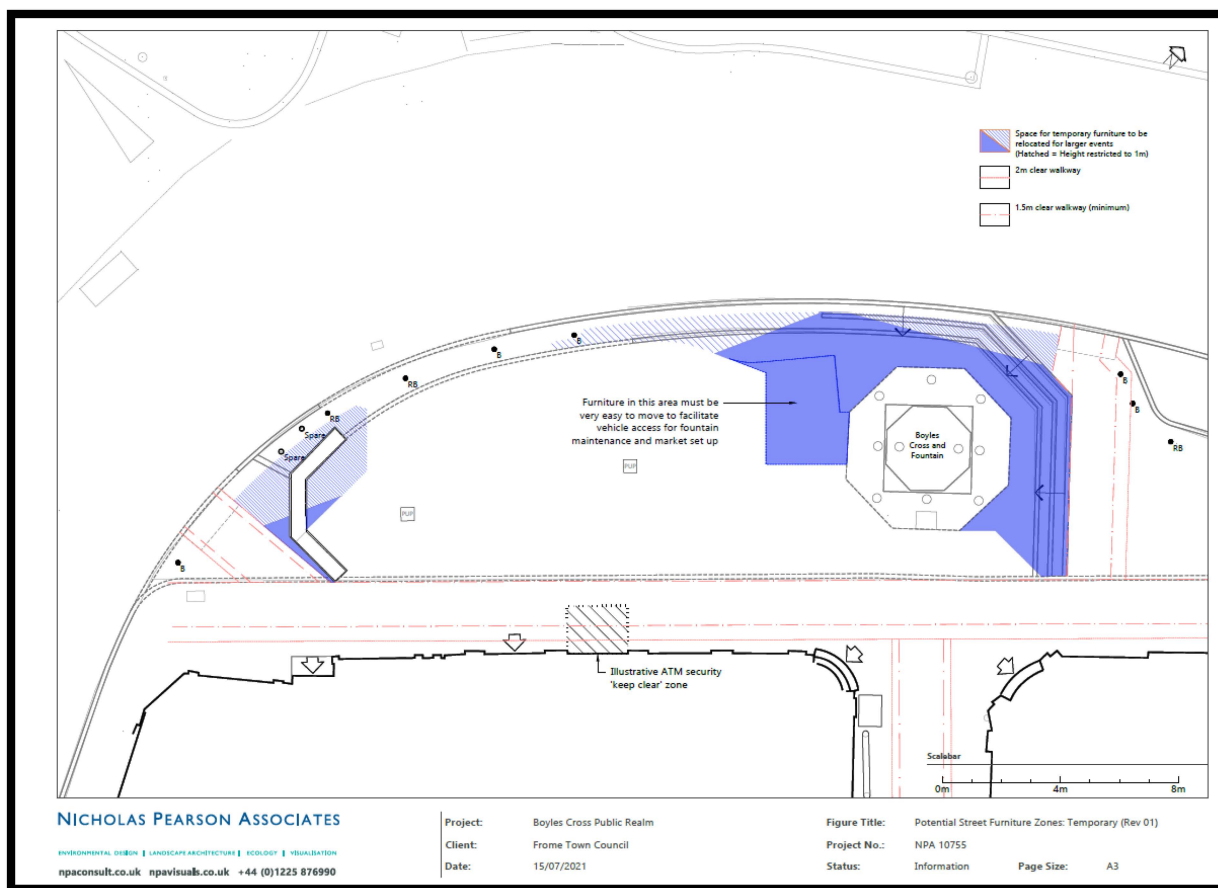


Sketch proposals

Potential areas for permanent street furniture



Potential areas for temporary street furniture



Nicholas Pearson Associates are currently working on some sketch proposals to show potential options for seating and planters both permanent and flexible options.

These sketches will be published as soon as they are available in advance of the meeting and will be presented at the meeting. This will be an opportunity to hear further feedback from stakeholders and Cllrs.