

Agenda Item 6

For decision - Management & Improvement plans for Weshmill and North Parade

Author: Chris Stringer, Environment Manager



Summary

This report introduces the new Management & Improvement Plans for Welshmill and North Parade.

These plans replace the previous plans, which were discussed and approved by the Council Matters Committee in July 2019 and September 2018, respectively.

The plan for Welshmill is scheduled to be reviewed annually, whereas the plan for North Parade is scheduled to be reviewed every other year. The next reviews are noted on both plans.

Background

We prepare and review plans for the management and improvement of all the parks and green spaces that we look after. These plans are discussed and then formally approved by the Council Matters Committee.

The plan for Welshmill can be [viewed here](#); and the plan for North Parade can be [viewed here](#).

The plans are then reviewed every year; or every other year (varying by space).

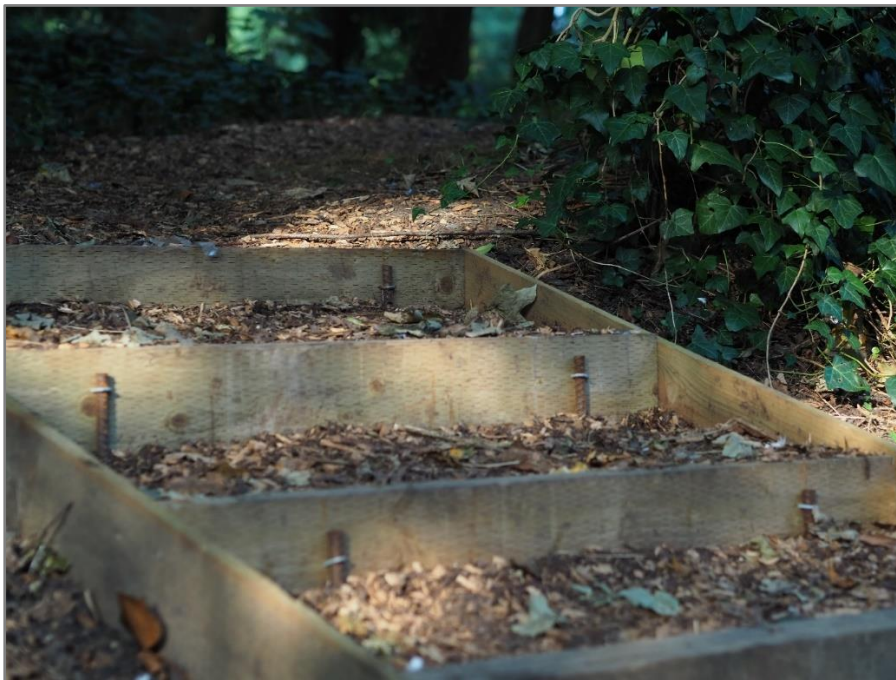
By design, the format of our plans is repeated across all the parks and green spaces that we look after. The plans include information like the main habitat typology and a management summary.

The management summary is particularly important to the plans since this shapes and influences much of our work.

The plans aren't intended to be daunting or overly technical. Rather, we hope that our plans are straightforward and engaging - and that they encourage people to head outdoors to explore Frome's parks and green spaces.

However, we have now included another type of information that we feel is important: who we work with (and thereby, how people can get more involved)

This information is included below the management summary.



Previously

The outgoing plans for Welshmill and North Parade were discussed and approved by the Council Matters Committee in July 2019 and September 2018.

Since last time...

We have added Ranger-made benches near the pump track at Welshmill; and we planted in and around the hedge lines and in the woods as part of the most recent 'Make It Happen' conference for pupils from Oakfield and Selwood Academies.

At North Parade, the Rangers have built two sets of timber steps taking you in and out of the woods. And alongside local residents and some more volunteers, we marked out the main woodland paths with woodchip.

Next steps

Next steps added for Welshmill:

- As one of our most important and valued play spaces, Welshmill will be a vital part of the Play Strategy that we're working on
- The strategy will look at play across the town; and will likely set out specific ideas and ambitions for Welshmill; alongside more general design principles for all our parks and green spaces
- Tree works based on the recommendations from our recent tree survey

Next steps added for North Parade:

- A new tree survey
- And continuing to work with the group of interested residents who live nearby; noting that the pandemic and lockdown happened not long after the first meeting with this new group

Site risk assessments

The Council Matters committee also discusses and approves all of the site risk assessments relating to the management plans. This reflects the Council's commitment to providing the town with important and relevant information about how we look after the spaces that we've been entrusted with.

By discussing and approving site risk assessments in this way, we are providing a clear and complete picture of what we do. The site risk assessment for Welshmill play area can be [viewed here](#), the assessment for Welshmill woods can be [viewed here](#), the assessment for riverside path between Welshmill and the Market Yard can be [viewed here](#) and the assessment for the pump track can be [viewed here](#). And the site risk assessment for North Parade can be [viewed here](#).

Reflecting the current situation, both site risk assessments now include a coronavirus risk assessment. It should be noted that this section in the risk assessments is very likely to see frequent updates and changes as the pandemic and lockdown evolve.

Recommendations

1. Adopt the updated management plans for Welshmill and North Parade
2. Adopt the new site risk assessments for Welshmill and North Parade
3. Approve the scheduled review dates for the plans
4. Approve the scheduled annual review of the site risk assessments
5. Delegate responsibility to the Environment Manager to deliver the plans
6. Delegate responsibility to the Environment Manager to keep the site risk assessments up to date in-between approval and the (scheduled) annual reviews, including updating the coronavirus risk assessment for both spaces