

# Climate Emergency – What Next?



Anna Francis  
Resilience Manager, Frome Town Council

# Presentation structure

- Opportunities and barriers
- Covid-19 – opportunities and needs
- Frome's climate emergency programme
- The vision
- Energy, Transport, Resources
- Next steps
- Questions
- Sharing ideas and examples

# Barriers

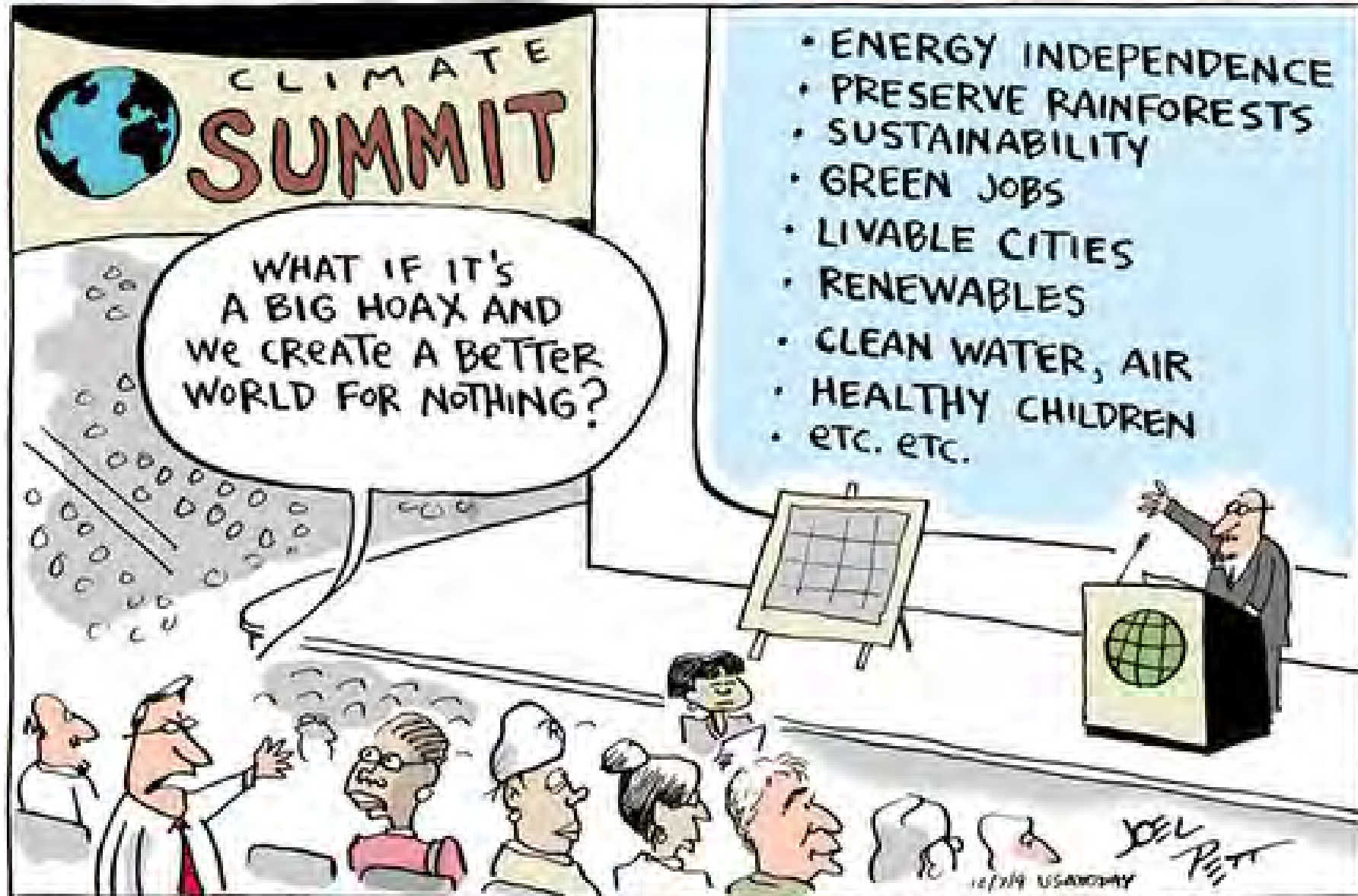
- Time
- Budget
- Political will
- Public support
- Skills and knowledge

# Opportunities

- Boost local economy
- Increased wellbeing
- Community resilience
- Secure external funding
- Boost reputation locally and nationally
- High return on investment

Frome's resilience and climate projects have featured on:





- ENERGY INDEPENDENCE
- PRESERVE RAINFORESTS
- SUSTAINABILITY
- GREEN JOBS
- LIVABLE CITIES
- RENEWABLES
- CLEAN WATER, AIR
- HEALTHY CHILDREN
- etc. etc.

WHAT IF IT'S  
A BIG HOAX AND  
WE CREATE A BETTER  
WORLD FOR NOTHING?

# Covid-19 Needs and Opportunities

- Economic impact – potentially 20% unemployment
- Mental health
- Public valuing health more than economy
- Clean air, active travel
- Connection with nature
- Desire for a ‘new normal’
- Opportunity to ‘build back better’ – green new deal?
- Shows what is possible with political will - [72% want action on climate](#)
- But, CO<sub>2</sub> only reduced 5% globally

# Climate Emergency Timeline

- New sustainability post created 2014
- One Planet Living in [Neighbourhood Plan 2015](#)
- [Climate Works Report](#) 2016
- Clean Healthy Future
- Emergency declared December 2018
- Energy, transport, resources workshops 2019
- Schools, college, ideas from children's strike
- [Rob Hopkins talk](#) – What If
- Climate Emergency Working Group
- Liaised with Somerset and Mendip
- [Strategy and action plan](#) March 2020





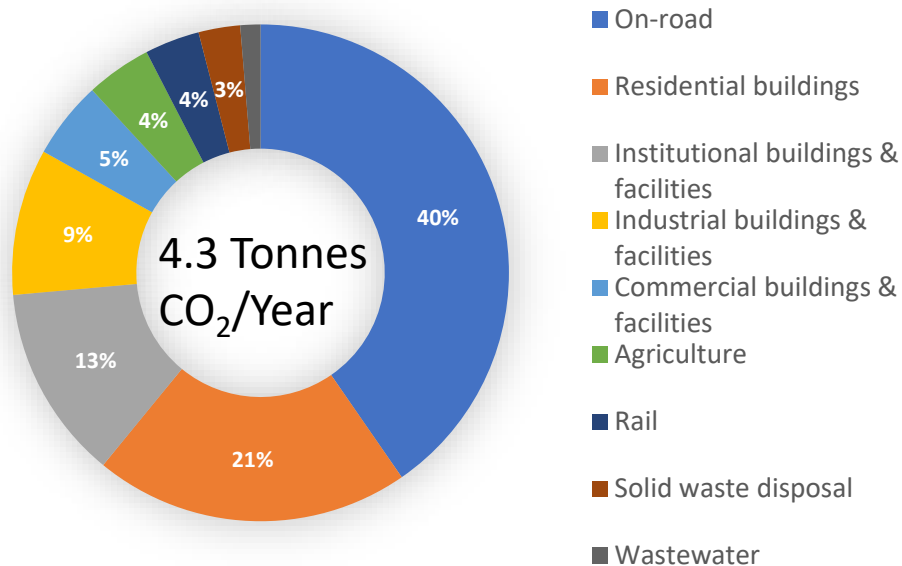
# Imagining the future



Image: James McKay

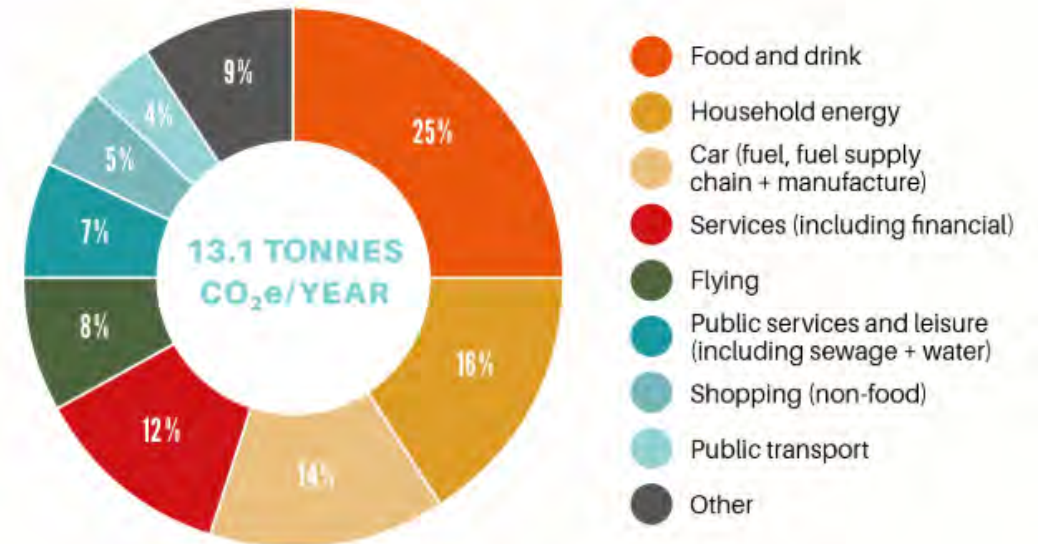
# Our Footprint

Frome's Carbon Dioxide Emissions



Source: Scatter  
120,400 tonnes

AVERAGE CARBON FOOTPRINT IN THE UK\*

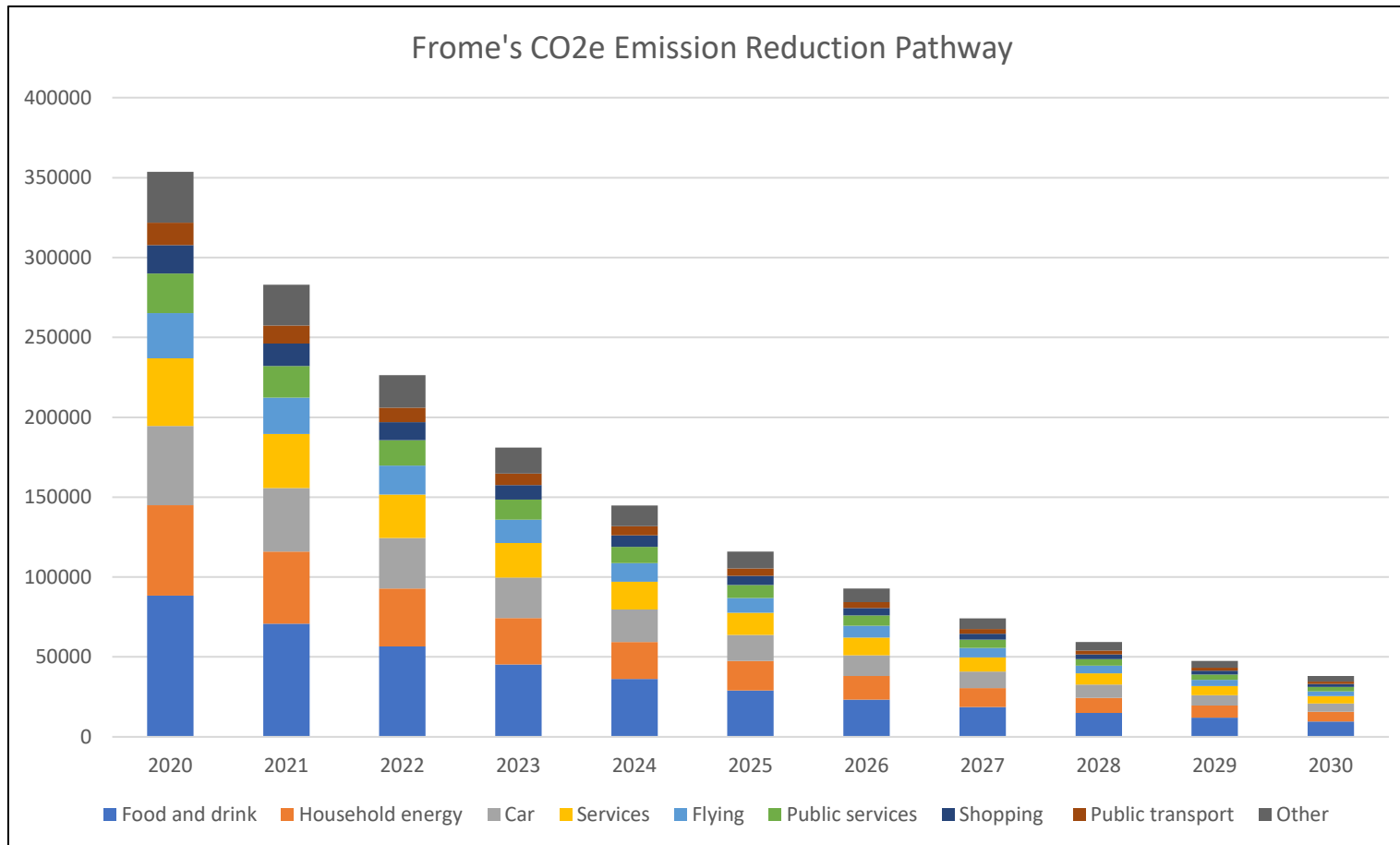


Source: Mike Berners Lee – Small World Consulting  
366,800 tonnes

Solutions prioritised using [Project Drawdown](#)



# Achieving zero carbon



Annual CO<sub>2</sub> reduction of  
current projects: approx.  
1000 tonnes

Annual reduction needed  
70,000 tonnes

20% annual reduction

53 million trees?!

# Energy

- Linked with [CSE](#) in Bristol and [NEA](#) to train volunteers
- Link with [Evolve](#) to promote free and discounted insulation
- [Open Homes events](#)
- Lend thermal imaging camera to residents
- Annual [Improve Don't Move](#) and the [green directory](#)



# Energy

- Supported [Frome Renewable Energy Co-op](#) to install 200kw of solar
- Medical Practice: 150kw  
Over 25 years: £110,000 savings  
1500 tonnes of CO2 reduction  
£100,000 for community fund
- Frome Football Club, 50kw: co-funded new stand
- Council budget: zero
- Contact [Community Energy England](#) to find your local co-op
- Funding available from [Rural Community Energy Fund](#) for development and / or [MCS](#)



# Energy

- [Solar streets](#) discounted solar offer
- 70 homes signed up, providing £26,000 free electricity, saving 120 tonnes CO<sub>2</sub> per year
- £50 referral fee funded free solar at youth centre
- Working with Wessex Resolutions CIC
- Council budget: zero





# Energy

- Free solar for business working with [Green Nation](#)
- [Energy sparks](#) helping schools reduce energy and carbon
- Lobbying Somerset County Council to [divest](#) their pension fund
- Council budget: zero





# Energy – next steps

- Understand our housing stock and retrofit opportunities
- Saxonvale – community owned [microgrid and zero carbon heat network](#)
- Explore innovative energy models e.g. [Energy Local](#) and community wind
- Work with other energy co-ops in Somerset and local councils to provide free solar for their assets e.g. via [Power Paired](#)
- Healthy Homes by Prescription



# Transport

- Annual school [Active Travel Challenge](#) with 2000 pupils.
- [Electric bike hire](#) via [Bike Rental Manager](#)
- Five free electric charge points installed via [Zero Carbon World](#)
- Linking with [Book My Charge](#) to enable domestic charge points to be shared
- Enabled [Co-Wheels](#) to provide shared hybrid vehicles
- Last three items: council budget zero





# Transport – next steps

- Map safe walking and cycling routes, mobility patterns and deliveries
- Enable long term borrowing of electric bikes
- Clean air campaign working with Tech Shed
- New Cycle Frome webpage
- Pop up cycle lanes
- Cycle courier
- Link with [Book My Charge](#) to enable domestic electric charge points to be shared



# Resources

- Worked with [Edventure Frome CIC](#) to set up the UK's first Library of Things: [SHARE](#)
- Average drill only used 13 minutes in its lifetime
- SHARE saves
  - £62,000 a year,
  - 92 tonnes of greenhouse gases
  - 127 tonnes of materials and waste.





# Resources

- Worked with [Edventure Frome CIC](#) to set up the UK's first [Community Fridge](#), there are now more than 90 in the UK
- Saves over 90,000 items a year
- Saves 140 tonnes of greenhouse gases, equivalent to driving 340,000 miles.
- Best community project - [Innovation in Politics](#) Awards Dec 2019
- [Hubub's community fridge network](#) has funding and toolkit





# Resources

- Support others such as the Toy Library and the Happy Nappy (cloth nappy) library, repair cafes
- Eliminated single use plastic at the council.  
Worked with community and businesses to achieve [SAS's plastic free community](#) status
- Worked with [Protomax](#) to recycle VHS tapes and create recycled plastic noticeboards

Next steps:

- Wild About Trees
- Support and explore local food growing
- Share pods



# Other activities

## Good Business Framework:

monthly visits to local businesses to promote and support environmental, social and economic best practice

## Fundraising:

£900,000 secured in five years through external grants and community shares.

[Climate Action Fund?](#)



Whatcombe fields, 32 acres saved by the local community using community shares



# Measuring progress

Alternatives to GDP? Happiness and Wellbeing? New Zealand, Iceland, Bhutan

Measuring social impacts / SROI

New Economics Foundation [Local Multiplier Effect](#) e.g. £1 spent at local farm generates an additional £1.6 in the local economy, compared with just £0.4 when spent in a supermarket.



# Taking the next step

- Link with CSE or similar
- Work with community to develop priorities, explore needs and opportunities
- Funding: Rural Community Energy Fund, MCS, [Awards for All](#), Climate Action Fund
- Focus on easy low cost projects such as Solar Streets
- Build on local connection and reputation
- Increasing precept to support climate role?
- Ensure renewables are included in Neighbourhood and Local Plans
- Promote sustainability standards for new developments

# Keep in touch

Anna Francis

- [francisa@frometowncouncil.gov.uk](mailto:francisa@frometowncouncil.gov.uk)
- [www.frometowncouncil.gov.uk/resilience](http://www.frometowncouncil.gov.uk/resilience)
- [www.frometowncouncil.gov.uk/climate-emergency](http://www.frometowncouncil.gov.uk/climate-emergency)
- Tel 01373 488579
- CSE Climate Emergency Programme and Parish footprinting: Rachel Coxcoon  
[rachel.coxcoon@cse.org.uk](mailto:rachel.coxcoon@cse.org.uk)