

Board 1: Welcome

Background

Frome Town Council has worked with the community over many years to explore how to improve the Market Place. Consultation has highlighted that it is important for us to address the congestion caused by the alignment of the bus stops in the Market Place, to make the area more pedestrian friendly and a more attractive place to shop, work, live and visit.

What is being proposed

The main elements of work proposed for the next phase of improvements to the Market Place include:

- Realignment of the bus laybys so that buses can park off the road.
- Better bus shelters for bus users.
- Enhancement of the existing informal and uncontrolled crossing points by installing wider pavements and coloured road surfacing where pedestrians regularly cross now (the existing Zebra and pelican crossings will remain).
- Improving the footpaths (new surfaces).
- A new loading bay outside The George and some adjustment to but no reduction of the disabled parking spaces.
- New seating and planting.

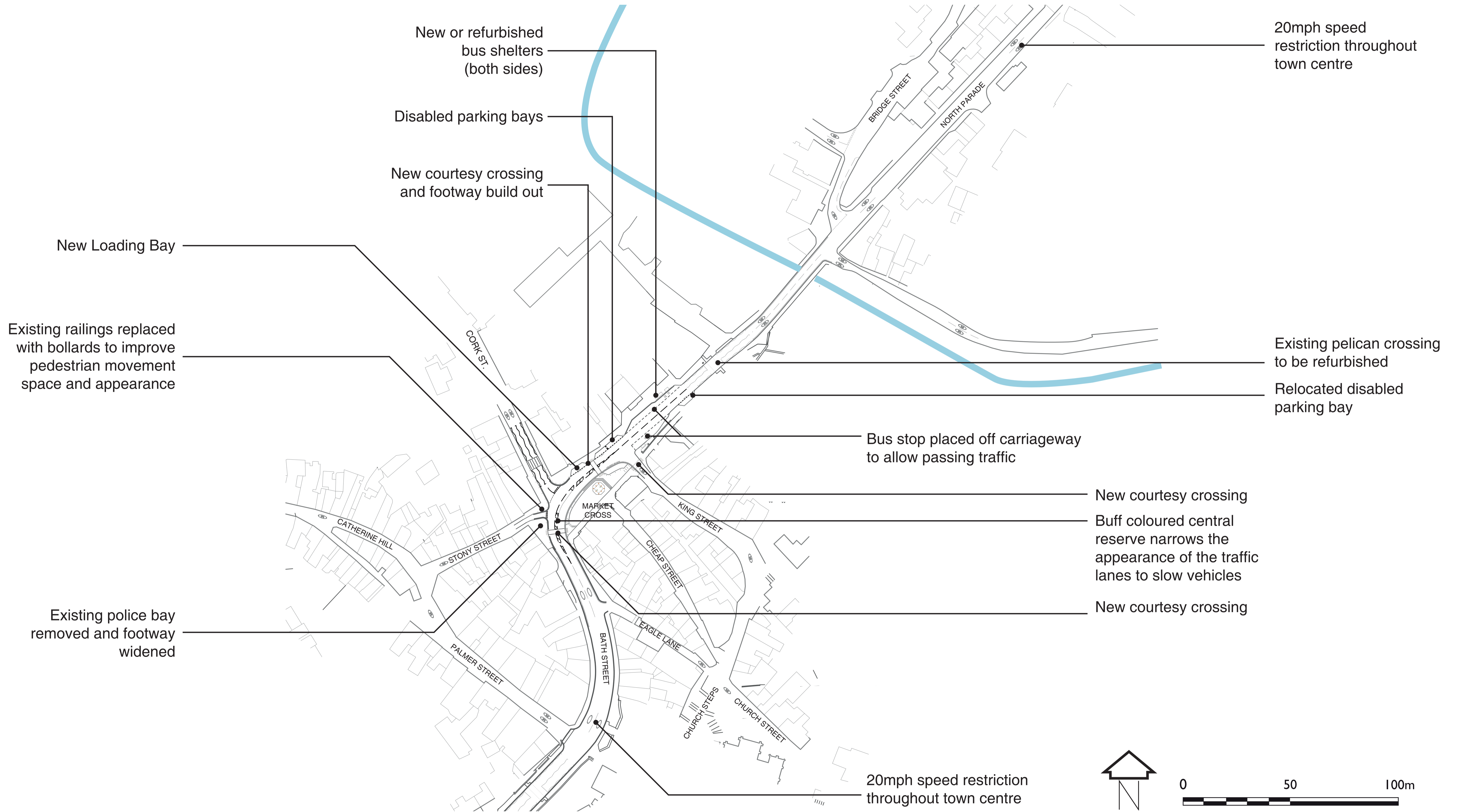


How you can be involved?

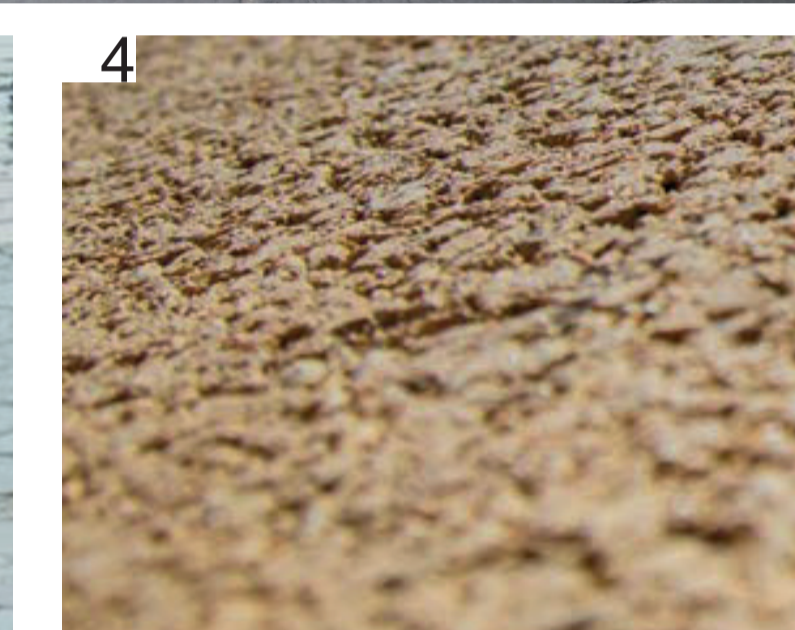
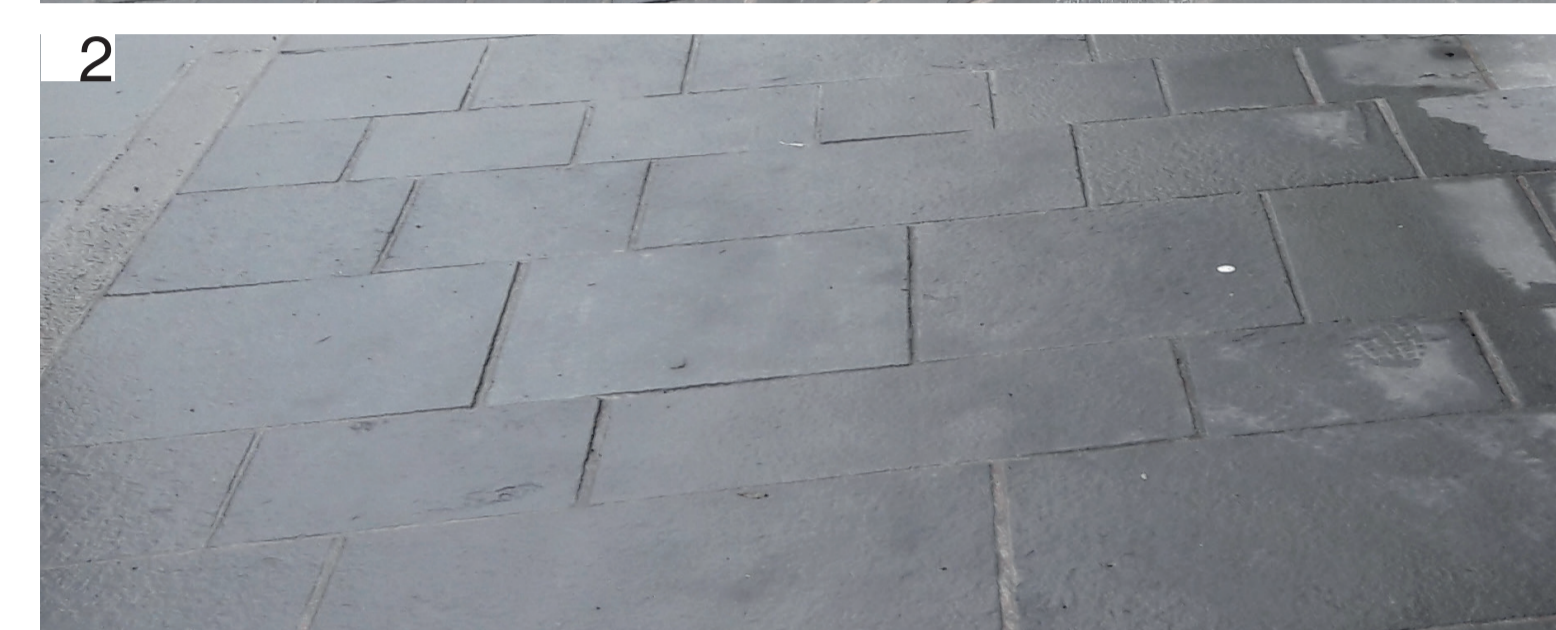
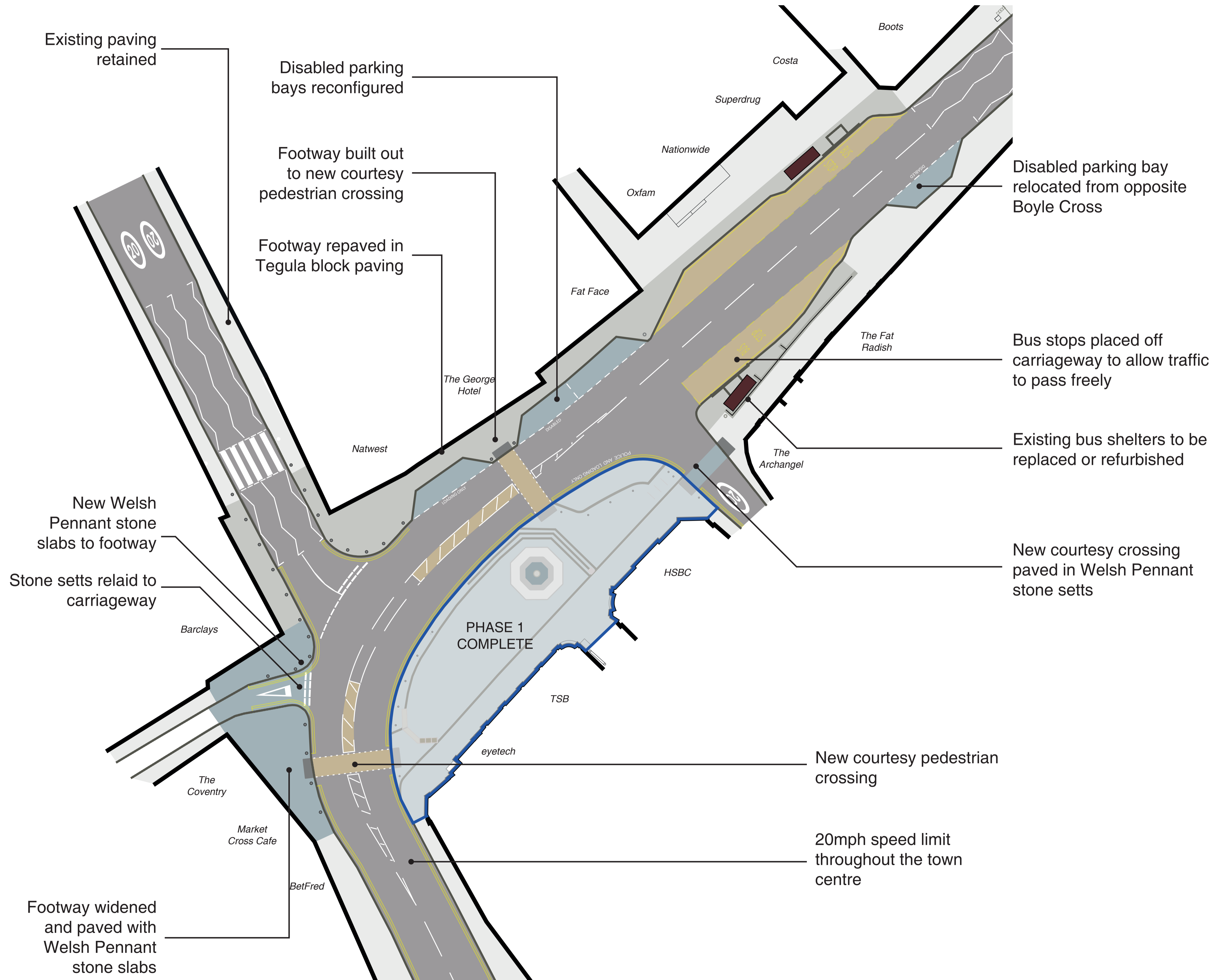
The aim is for work to start in 2019 once planning consent has been secured from Mendip District Council. We would like your comments on the design proposals before Frome Town Council considers the scheme on 5 December and then submits a planning application.

The following exhibition boards outline our plans, including a number of design options for seating and planting in the area. Comment forms are available at the reception desk, and we very much welcome your input. Alternatively, once you have viewed the proposals, you can comment online at consultation@frometowncouncil.gov.uk

Board 2: Phase 2 scheme overview



Board 3: Phase 2 Market Place proposals



1. Welsh Pennant stone setts
2. Welsh Pennant stone slabs
3. Tegula 'Pennant Grey' concrete block paving
4. Buff coloured 'Mastertint' asphalt
5. 'Knot Mill' bollard

Proposed Materials

Board 4: Proposed visualisations

Existing view (below)
Proposed visualisation (right)



Existing view (below)
Proposed visualisation (right)

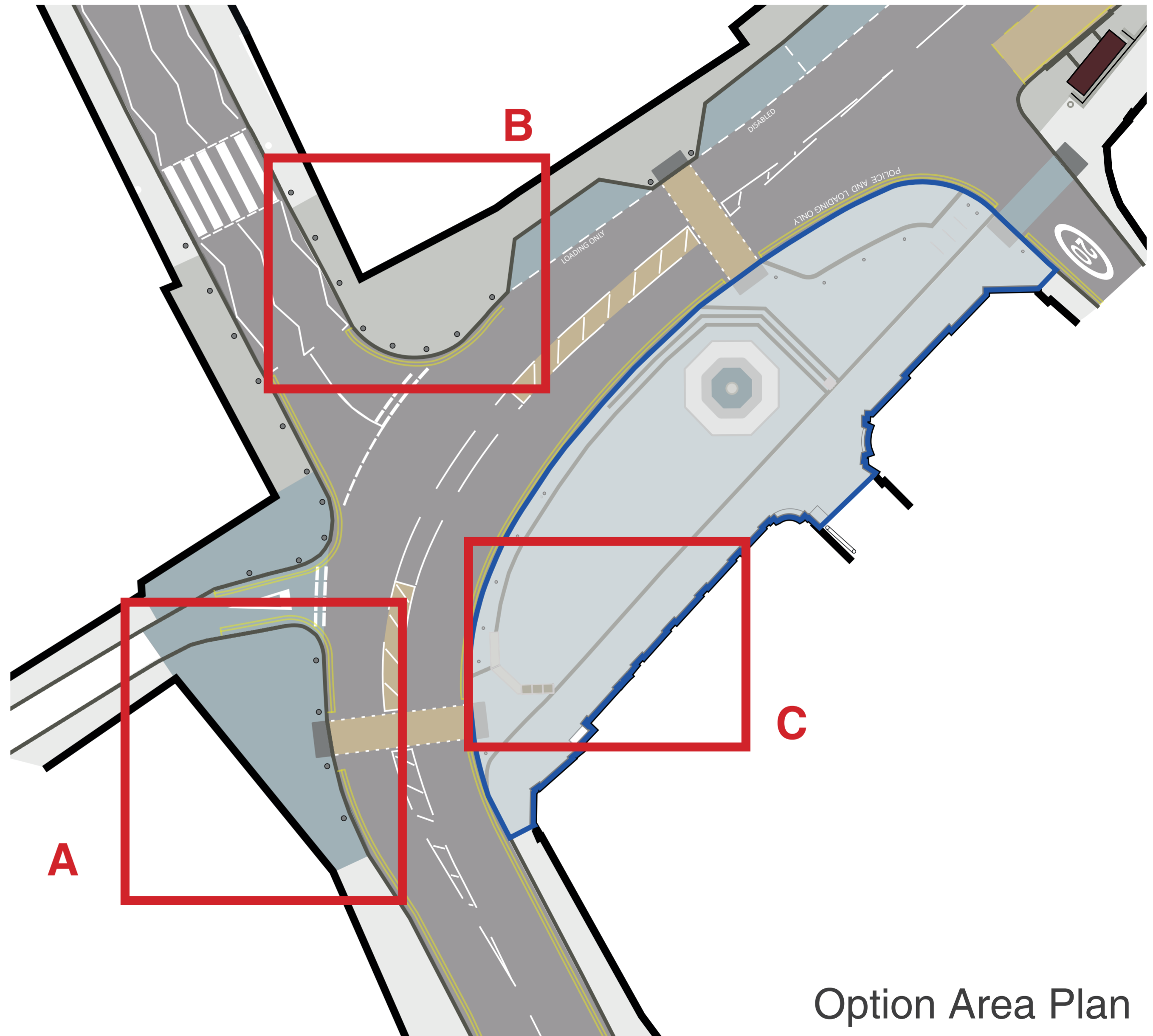


Board 5: Street furniture options

We are looking for public comment on a range of street furniture options for the enhancement of the Market Place.

The options are illustrated on the following boards for three potential areas - A, B and C.

Please consider which options you believe could provide the greatest enhancement for the town.



Option Area Plan

Board 6: Street furniture Area A

Option 1 provides an extra bench seat and new planters to the rear of the footway. The seat and planters are selected to complement the new wall bench near Boyle Cross. A new street tree provides a focal point in views through the Market Place and Bath Street.

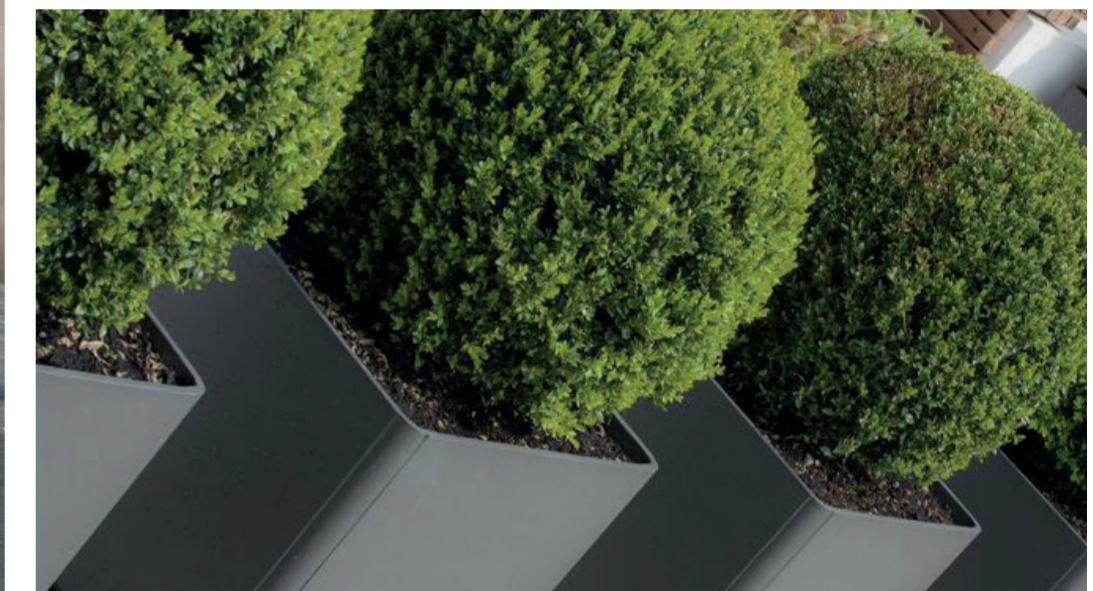


Option 2 provides a large central planter surrounded by a circular bench seat and supplemented by a bench and planters to the rear of the footway. The seat and planters are selected to complement the recent wall bench near Boyle Cross.

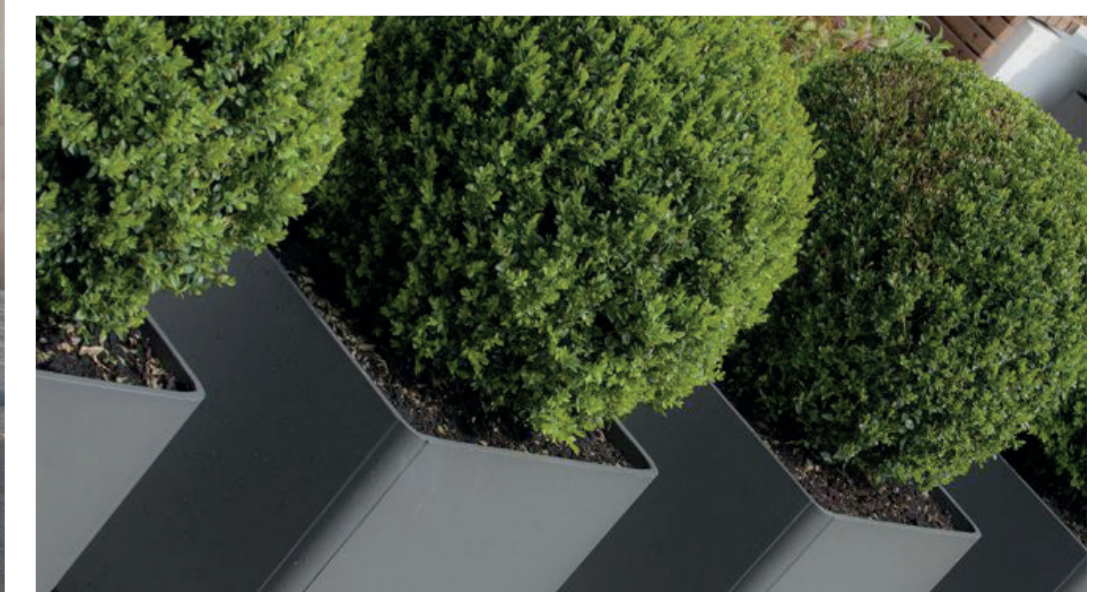


Board 7: Street furniture Area B

Option 1 provides additional bench seats and new planters whilst maintaining space for pedestrian movement. The seat and planters are selected to complement the recent wall bench near Boyle Cross. This option complements Area A: Option 1.



Option 2 provides additional bench seats and new planters whilst maintaining space for pedestrian movement. The seat and planters are selected to complement the new wall bench near Boyle Cross. This option complements Area A: Option 2.



Board 8: Street furniture Area C

Option 1 extends the existing new stone wall to provide additional timber seat tops and a decorative plant bed at the top end of the Market Place. A new natural stone wall tapers down to provide two seats at an accessible height.



Option 2 would lower one wing of the existing wall to accommodate a new planter, adding colour to this end of the Market Place. New single seats provide additional seating in front of the wall.

