

Participatory Budgeting

Do we need toilets in Victoria Park and if so,
what is your preferred option?

What are the issues?

Should we be spending £20,000 a year on the loos in Victoria Park?

We know that the toilets are in a poor state and in recent years it has cost around £20,000 per year to keep the existing toilets open.

We do not think that this is not desirable or sustainable and would like to ask you two questions:

- 1 Should there be toilets in Victoria Park?
- 2 If the answer is yes please consider the 3 options.

Option 1 Refurbished toilets
Option 2 New toilets
Option 3 A new or extended cafe incorporating toilets



The first question:

Do we want Toilets in the park?

This is a straight yes or no option.

DESCRIPTION

If **No** Close existing toilets and do not replace facility -
Building made secure to prevent access
Building could become a canvas for street art
Next nearest toilets located at Frome Town Hall (Park Road)

If the answer is **yes** then we look at the following options.



Things to think about before voting for this...

- The existing toilets are regularly vandalised
- If we close them, the £20k saving could be spent elsewhere in the town - on things like events; play equipment & sports facilities
- Some or all of the £20k could also be used to support Frome's Community Toilet Scheme
- Or support the campaign for a Changing Places accessible toilet in the town centre
- Of course, this option would mean that there wouldn't be any public toilets in the park, but the refurbished Town Hall will provide modern public toilets during working hours
- But the Town Hall isn't the park. And nicer toilets in the park would mean that people can stay in the park for longer
- There would be lots of options for the existing toilet building: Ideas welcome!

Option 1

Internal refurbishment of existing toilet building

DESCRIPTION

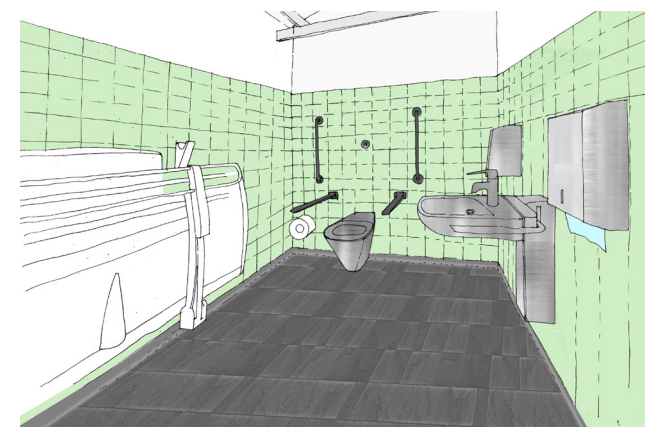
Internal refurbishment of existing facilities

Improve internal appearance

Improved durability and ease of cleaning

Some enhancement of accessibility

Improve ventilation, windows and lighting.



No change to external appearance

Things to think about before voting for this...

- If we keep the toilets open we will need to improve them
- The cost of the refurbishment could be funded by raising Council Tax or cancelling/postponing projects elsewhere in Frome
- The toilets would still require daily cleaning; and general care & repair
- They might still be subject to vandalism and they'd still be unattractive to visitors enjoying Mary Baily, including little ones
- But we would be able to introduce more vandal-resistant fittings; time-coded locks and nicer and more up-to-date toilets
- Although there will be on going costs, they should prove to be less than those we're currently paying, an estimated £15k per year, rather than £20k
- We'll explore the possibility, but it may not be able to specify a Changing Places toilet in the space that's available in the current building
- There wouldn't be any changes to the existing cafe building in this option
- So in summary, the toilets would be better, more accessible and inclusive - and likely a bit cheaper to clean and maintain
- The existing building would still be limited, so the doors would still face a dark corner of the park - which you just wouldn't do if designing today



Option 2

Replace existing toilets

DESCRIPTION

Replace building with new toilets
Improved visual appearance
Improve accessibility features
Improved supervision of entrances
Improve durability and ease of cleaning
Improve ventilation, windows and lighting



Possible locations for new toilet facilities



These images are an artist's impression only



Things to think about before voting for this...

- Could be on the footprint of the existing toilet building but re-configured so there are better lines of sight to the building; and doors that open towards Mary Baily
- Or somewhere else in the park, nearer the current café; or somewhere central for Mary Baily as well as Victoria Park
- The new toilets will still need to be cleaned and looked after... Which means there will still be an ongoing, annual cost to maintain the toilets
- This work is likely to be contracted out: an estimated £10k to £15k per year, rather than £20k
- The £20,000 we're currently spending becomes a repayment on a loan of up to £400k
- The loan enables us to build brand new toilets somewhere in the park
- By voting for this option, you're voting for the principle not a final design
- If this option is the most popular in the vote, we'll start working on all the essential details, including things like the location of the new toilets

Option 3

New facilities (cafe and toilets)

DESCRIPTION

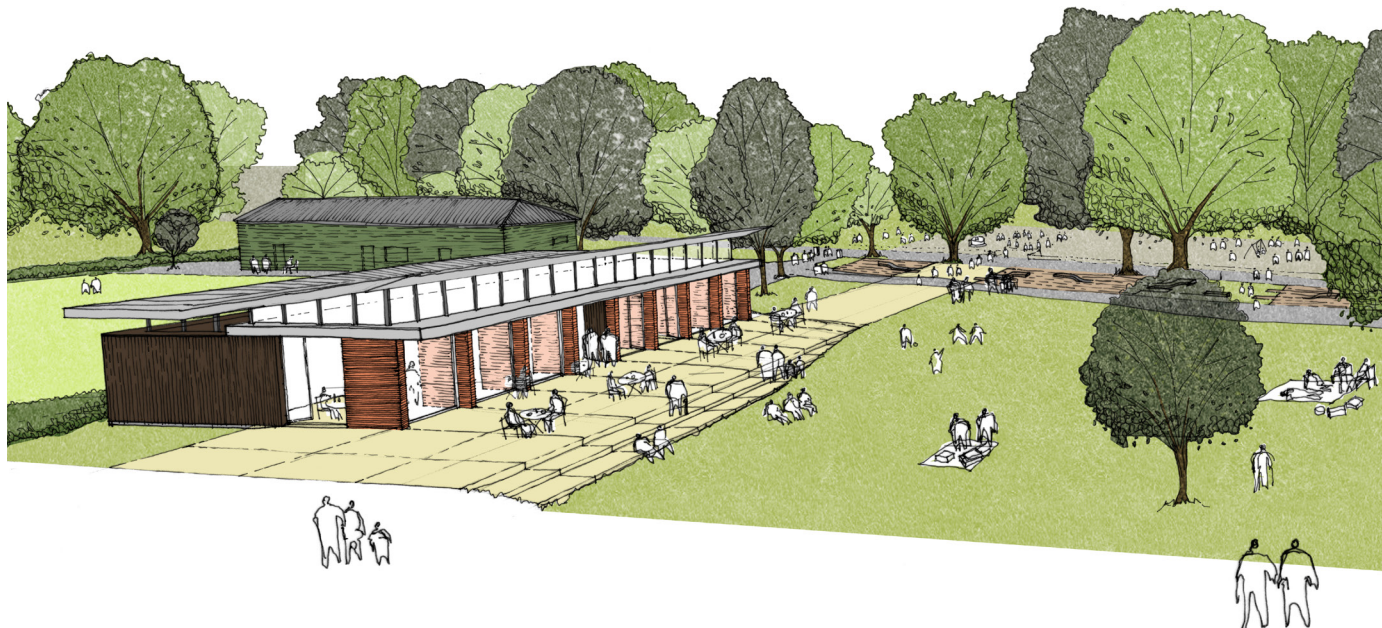
Provide new building with toilets

Promote visual links between park and playing field

Landmark building to provide focus for activities

Options for use of existing cafe/ toilet buildings

Potential collaboration with cafe providers



These images are an artist's impression only

Things to think about before voting for this...

- Potentially a central location for a brand new café with lovely new toilets serving both Victoria Park and the Mary Bailly – the exact location would be subject to consultation and planning consent
- Again, the £20,000 we're currently spending becomes a repayment on a loan of up to £400k (payable back over 20 years)
- Refreshments inside in warmth and comfort when its raining, snowing or just not so nice outside
- Modern accessible and inclusive toilets with an on-site presence to keep them clean tidy and well maintained
- A brand new building would mean flexibility to explore the possibility of a toilet built to the Changing Places standard
- A new or improved café could provide scope for evening use, including community hire
- If this option is the most popular option we'll start work on the plans and work out how we provide an improved cafe with new toilets
- This will include all of the essential details, including a decision on whether we build a new cafe (and if so where)
- Or whether we improve and/or extend the existing café

Summary

	Close the Toilets	Option 1 Refurbished toilets	Option 2 New toilets	Option 3 New toilets. and a new or extended cafe
Will we have toilets in the park?	£0 £20,000 saved, in fact	Up to £75,000	£200,000 - £300,000	£250,000 to £400,000
Estimated cost	No	Yes	Yes	Yes
Where will they be?		Where they currently are	To be agreed & confirmed	To be agreed & confirmed
How will they be cleaned?		Cleaned by contract up to £15,000 per year	Either cleaned by contract or by the cafe	Cleaned by the cafe
When will it happen?	Spring 2017	Summer 2017	Summer 2019	Summer 2019
What happens to existing cafe building?	No changes	No Changes	No changes	Depends on whether we have a new or remodelled cafe

How do I vote?



Online:

www.frometowncouncil.gov.uk/voteonvictoriaparktoilets/

By Phone:

01373 465757

In Person:

Frome Town Hall
Christchurch Street West
Frome
BA11 1EB

VOTE from 1st - 16th April