



## **Participatory Budgeting**

**Do we need toilets in Victoria Park and if we do,  
what is your preferred option?**

# What are the issues?

Should we be spending £20,000 a year on the loos in Victoria Park?

We know that the toilets are in a poor state and in recent years it has cost up to £20,000 per year to keep the existing toilets open.

We feel that that is not desirable or sustainable and would like to ask you two questions:

- 1 Should there be toilets in Victoria Park?
- 2 If the answer is yes please consider the 3 options.

**Option 1 Refurbished toilets**  
**Option 2 New toilets**  
**Option 3 A new or extended cafe incorporating toilets**



# The first question:

## Do we want Toilets in the park?

**This is a straight yes or no option.**

### DESCRIPTION

If **No** Close existing toilets and do not replace facility - Building is made secure to prevent access - Building could become a canvas for street art - Next nearest toilets located at FTC offices (Park Road)

If the answer is **yes** then we look at the following options.



## Things to think about before voting for this...

- The existing toilets are regularly vandalised
- If we close them, the £20k saving could be spent elsewhere in the town - on things like events; play equipment & sports facilities
- Some or all of the £20k could also be used to support Frome's Community Toilet Scheme
- Or support the campaign for a Changing Places accessible toilet in the town centre
- Of course, this option would mean that there wouldn't be any public toilets in the park, but the refurbished Town Hall will provide modern public toilets during working hours
- But the Town Hall isn't the park. And nicer toilets in the park would mean that people can stay in the park for longer
- There would be lots of options for the existing toilet building: Ideas welcome!

# Option 1

## Internal refurbishment of existing toilet building

### DESCRIPTION

Internal refurbishment of existing facilities only - Improve internal appearance. Potential improved durability and ease of cleaning - Some enhancement of accessibility - Improve ventilation, windows and lighting.



No change to external appearance

### Things to think about before voting for this...

- If we keep the toilets open we will need to improve them
- The cost of the refurbishment could be funded by raising Council Tax or cancelling/postponing projects elsewhere in Frome
- The toilets would still require daily cleaning; and general care & repair
- They might still be subject to vandalism and they'd still be unattractive to residents enjoying Mary Baily, including little ones
- But we would be able to introduce more vandal-resistant fittings; time-coded locks and nicer and more up-to-date toilets
- Although there will be on going costs, they should prove to be less than those we're currently paying, an estimated £10k to £15k per year, rather than £20k
- We'll explore the possibility, but it may not be able to specify a Changing Places toilet in the space that's available in the current building
- There wouldn't be any changes to the existing cafe building in this option
- So in summary, the toilets would be better, more accessible and inclusive - and likely a bit cheaper to clean and maintain
- The existing building would still be limited, so the doors would still face a dark corner of the park - which you just wouldn't do if designing today



## Option 2

### Replace existing toilet building

#### DESCRIPTION

Replace building with new toilet facilities - Improved visual appearance  
Improve accessibility features  
Improved supervision of entrances  
Improved durability and ease of cleaning  
Improved ventilation windows and lighting



Possible locations for new toilet facilities



These images are an artist's impression only



### Things to think about before voting for this...

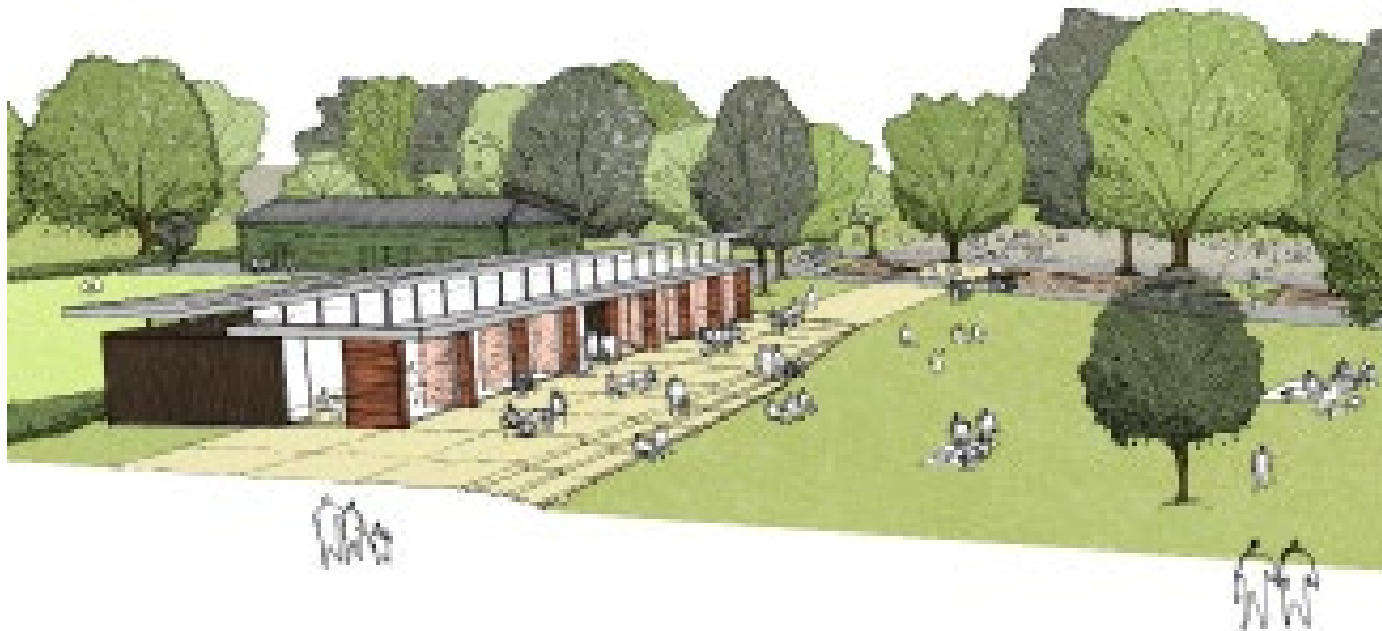
- Could be on the footprint of the existing toilet building but re-configured so there are better lines of sight to the building; and doors that open towards Mary Baily
- Or somewhere else in the park, nearer the current café; or somewhere central for Mary Baily as well as Victoria Park
- The new toilets will still need to be cleaned and looked after... Which means there will still be an ongoing, annual cost to maintain the toilets
- This work is likely to be contracted out: an estimated £10k to £15k per year, rather than £20k
- The £20,000 we're currently spending becomes a repayment on a loan of up to £400k
- The loan enables us to build brand new toilets somewhere in the park
- By voting for this option, you're voting for the principle not a final design
- If this option is the most popular in the vote, we'll start working on all the essential details, including things like the location of the new toilets

## Option 3

### Better facilities (a new or extended cafe and new toilets)

#### DESCRIPTION

Provide new building with toilets and other facilities - Strong links with previously completed masterplan  
-Promote stronger visual links between Park and playing field - Options for location and design of new building  
Potential landmark building to provide focus for activities - Options for use of existing cafe/ toilet buildings - Potential collaboration with cafe providers



These images are an artist's impression only

### Things to think about before voting for this...

- Potentially a central location for a brand new café with lovely new toilets serving both Victoria Park and the Mary Bailly – the exact location would be subject to consultation and planning consent
- Again, the £20,000 we're currently spending becomes a repayment on a loan of up to £400k (payable back over 20 years)
- Refreshments inside in warmth and comfort when its raining, snowing or just not so nice outside
- Modern accessible and inclusive toilets with an on-site presence to keep them clean tidy and well maintained
- A brand new building would mean flexibility to explore the possibility of a toilet built to the Changing Places standard
- A new or improved café could provide scope for evening use, including community hire
- If this option is the most popular option we'll start work on the plans and work out how we provide an improved cafe with new toilets
- This will include all of the essential details, including a decision on whether we build a new cafe (and if so where) or whether we improve and/or extend the existing café

# Summary

	Close the Toilets	Option 1 Refurbished toilets	Option 2 New toilets	Option 3 New toilets. and a new or extended cafe
<b>Estimated cost</b>	£0 £20,000 saved, in fact	£50,000 to £75,000	£200,000 - £300, 000	£250,000 to £400,000
<b>Will we have toilets in the park?</b>	No	Yes	Yes	Yes
<b>Where will they be?</b>		Where they currently are	To be agreed & confirmed	To be agreed & confirmed
<b>How will they be cleaned?</b>		Cleaned by contract £10,000 - £15,000 per year	Either cleaned by contract or by the cafe	Cleaned by the cafe
<b>When will it happen?</b>	Spring 2017	Summer 2017	Summer 2019	Summer 2019
<b>What happens to existing cafe building?</b>	No changes	No Changes	No changes	Depends on whether we have a new or remodelled cafe

# How do I vote?



## Online:

[www.frometowncouncil.gov.uk/voteonvictoriaparktoilets/](http://www.frometowncouncil.gov.uk/voteonvictoriaparktoilets/)

## By Phone:

01373 465757

## In Person:

Frome Town Hall  
Christchurch Street West  
Frome  
BA11 1EB

**VOTE from 1st April - 16th April**